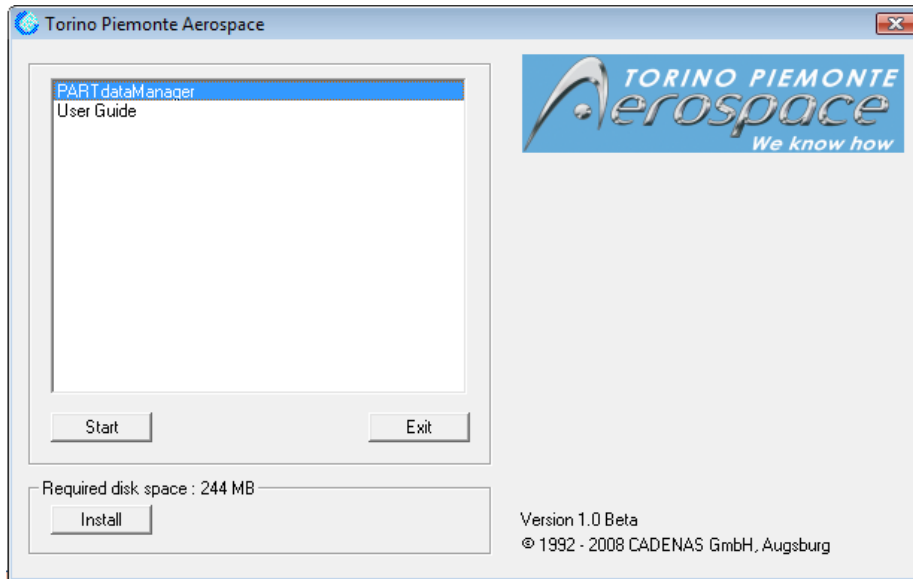


Catalog User Guide

START THE CATALOG BROWSER

- 1) Run CdStart.exe inside folder “software”

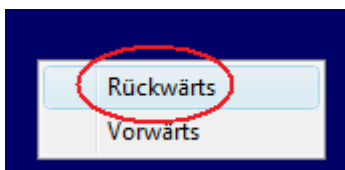


- 2) Automatically the PARTDataManager application starts.

NAVIGATE THE ASSISTANT

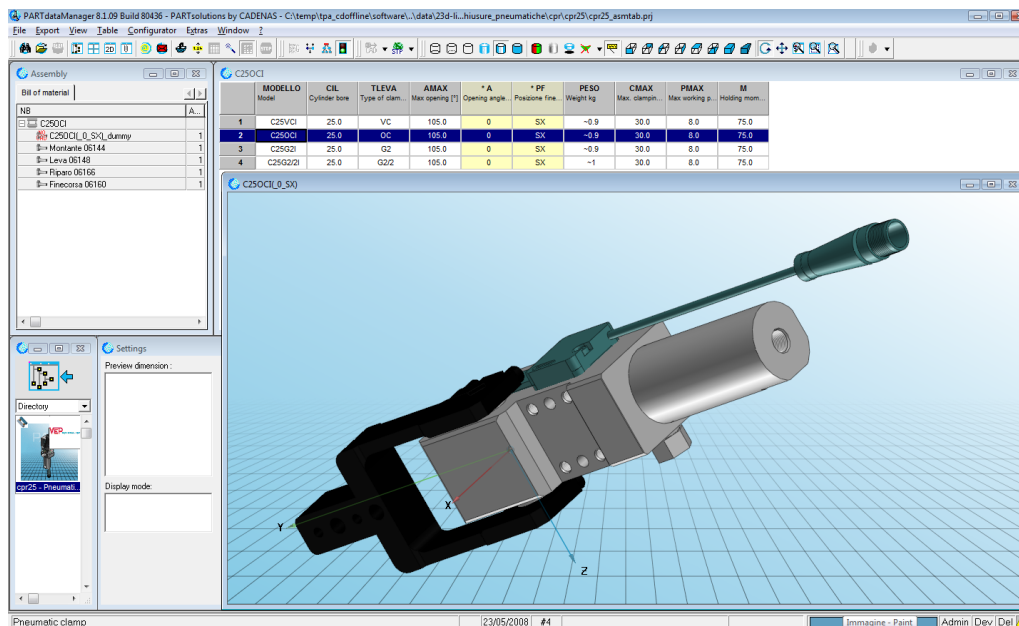
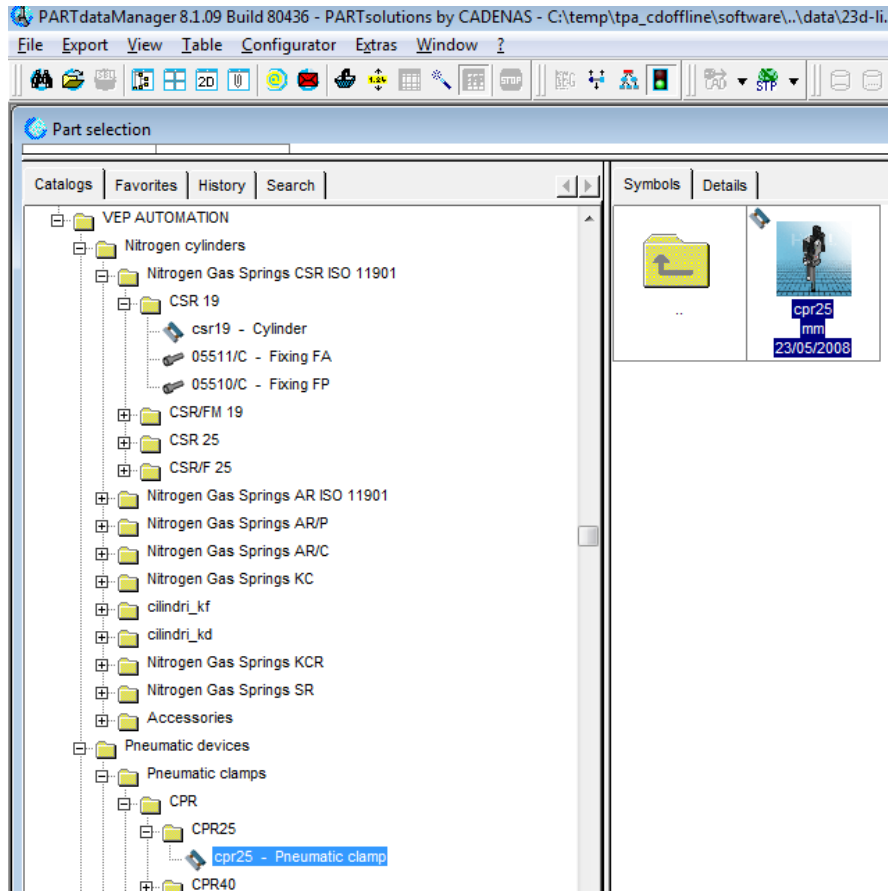
- 1) If the web page doesn't automatically start then from PartDataManager catalog structure double click on “START” icon to launch the catalog assistant.
- 2) The catalog assistant is a web page so you can navigate through the link to access all the information.

NOTE: when the internal pages of each company are clicked then is open a new browser window. If you close that browser you cannot go back via the “Home” link, then the only way is right-click on the page and select the command “rückwärts” (it's german and it means “Back”)




DOWNLOAD 3D-2D CATALOG COMPONENT

- 1) Enter in a catalog page and select a component inside the table (see images below)



- 2) Then after the component selection click on export Menu and select the format to download
- 3) If you need a 2D view you after the selection you have to click on "2D view" button.
- 4) Then select the view and export it from Export Menu



- 5) To return to assistant navigation press the “Assistant button” 
- 6) To navigate manually the catalog structure press the “Navigation button” 