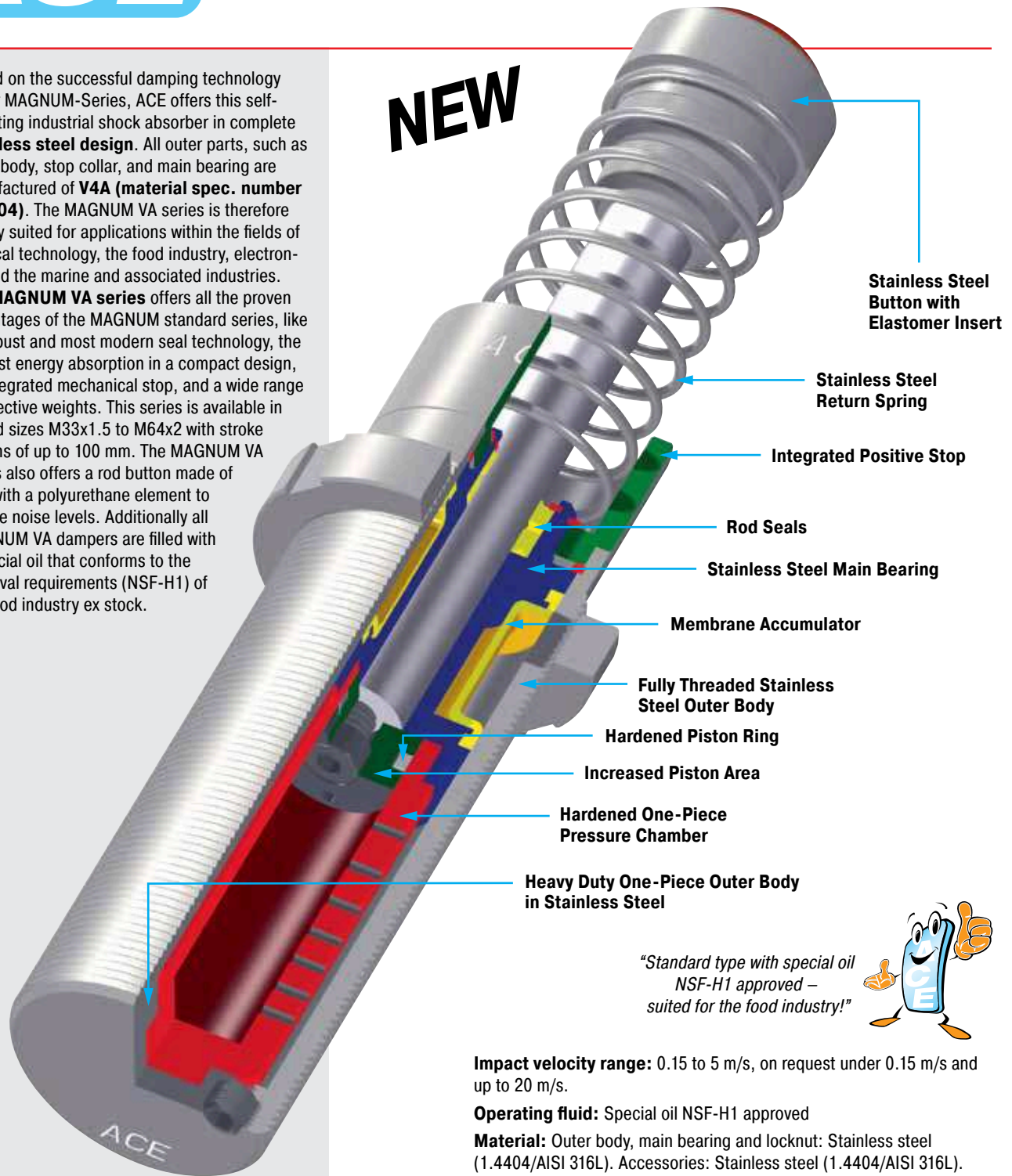


Based on the successful damping technology of our MAGNUM-Series, ACE offers this self-adjusting industrial shock absorber in complete **stainless steel design**. All outer parts, such as outer body, stop collar, and main bearing are manufactured of **V4A (material spec. number 1.4404)**. The MAGNUM VA series is therefore ideally suited for applications within the fields of medical technology, the food industry, electronics and the marine and associated industries. The **MAGNUM VA series** offers all the proven advantages of the MAGNUM standard series, like its robust and most modern seal technology, the highest energy absorption in a compact design, an integrated mechanical stop, and a wide range of effective weights. This series is available in thread sizes M33x1.5 to M64x2 with stroke lengths of up to 100 mm. The MAGNUM VA series also offers a rod button made of V4A with a polyurethane element to reduce noise levels. Additionally all MAGNUM VA dampers are filled with a special oil that conforms to the approval requirements (NSF-H1) of the food industry ex stock.



**NEW**

Stainless Steel Button with Elastomer Insert

Stainless Steel Return Spring

Integrated Positive Stop

Rod Seals

Stainless Steel Main Bearing

Membrane Accumulator

Fully Threaded Stainless Steel Outer Body

Hardened Piston Ring

Increased Piston Area

Hardened One-Piece Pressure Chamber

Heavy Duty One-Piece Outer Body in Stainless Steel

*"Standard type with special oil NSF-H1 approved – suited for the food industry!"*



**Impact velocity range:** 0.15 to 5 m/s, on request under 0.15 m/s and up to 20 m/s.

**Operating fluid:** Special oil NSF-H1 approved

**Material:** Outer body, main bearing and locknut: Stainless steel (1.4404/AISI 316L). Accessories: Stainless steel (1.4404/AISI 316L). Piston rod: hardened and chrome plated high tensile steel. Button: Stainless steel (1.4404/AISI 316L) with elastomer insert. Return spring: Stainless steel.

**Capacity rating:** For emergency only applications it is sometimes possible to exceed the published max. capacity ratings. Please consult ACE for further details. If your application exceeds the tabulated  $W_4$  figures (max. energy per hour Nm/hr) consider additional cooling. Ask ACE for further details.

**Mounting:** In any position

**Operating temperature range:** -12°C to 70°C. For higher temperatures consult ACE.

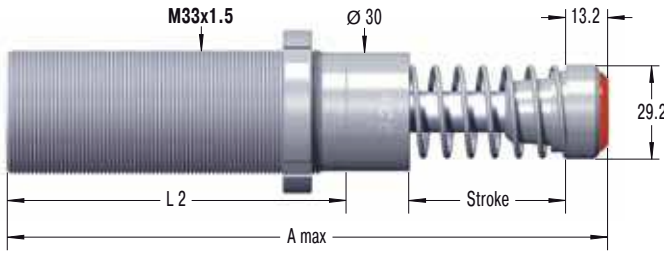
**On request:** special oils, viton seals and special accessories

**Noise reduction:** 3 to 7 dB when using the impact buttons with urethane insert.

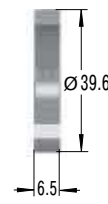


# NEW

### MC33xxEUM-V4A

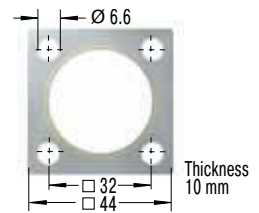


### NM33-V4A



Locking Ring

### QF33-V4A

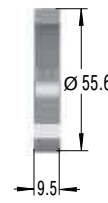


Square Flange

### MC45xxEUM-V4A

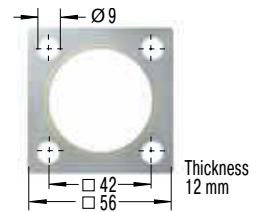


### NM45-V4A



Locking Ring

### QF45-V4A

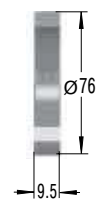


Square Flange

### MC64xxEUM-V4A

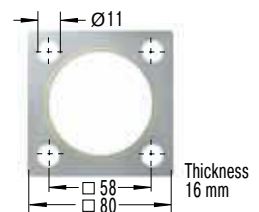


### NM64-V4A



Locking Ring

### QF64-V4A



Square Flange

### Dimensions

Type	Stroke mm	A max	L2
MC3325EUM-V4A	23	151.2	83
MC3350EUM-V4A	48.5	202.2	108
MC4525EUM-V4A	23	164.5	95
MC4550EUM-V4A	48.5	214.4	120
MC4575EUM-V4A	74	265.4	145
MC6450EUM-V4A	48.5	244.1	140
MC64100EUM-V4A	99.5	345.1	191

### Ordering Example

Self-Compensating **MC4550EUM-1-V4A**  
 Thread Size M45  
 Stroke 50 mm  
 EU Compliant  
 Metric Thread  
 Effective Weight Range Version  
 Stainless Steel 1.4404/AISI 316L

### Capacity Chart MC33/MC45/MC64

Type	Max. Energy Capacity		1 Effective Weight me					Min. Return Force N	Max. Return Force N	Rod Reset Time s	Max. Side Load Angle °	Weight kg
	2 W <sub>3</sub> Nm/Cycle	W <sub>4</sub> Nm/h	Soft				Hard					
			-0 min. max. kg	-1 min. max. kg	-2 min. max. kg	-3 min. max. kg	-4 min. max. kg					
MC3325EUM-V4A	155	75 000	3 - 11	9 - 40	30 - 120	100 - 420	350 - 1 420	45	90	0.03	4	0.45
MC3350EUM-V4A	310	85 000	5 - 22	18 - 70	60 - 250	240 - 840	710 - 2 830	45	135	0.06	3	0.54
MC4525EUM-V4A	340	107 000	7 - 27	20 - 90	80 - 310	260 - 1 050	890 - 3 540	70	100	0.03	4	1.13
MC4550EUM-V4A	680	112 000	13 - 54	45 - 180	150 - 620	520 - 2 090	1 800 - 7 100	70	145	0.08	3	1.36
MC4575EUM-V4A	1 020	146 000	20 - 80	70 - 270	230 - 930	790 - 3 140	2 650 - 10 600	50	180	0.11	2	1.59
MC6450EUM-V4A	1 700	146 000	35 - 140	140 - 540	460 - 1 850	1 600 - 6 300	5 300 - 21 200	90	155	0.12	4	2.9
MC64100EUM-V4A	3 400	192 000	70 - 280	270 - 1 100	930 - 3 700	3 150 - 12 600	10 600 - 42 500	105	270	0.34	3	3.7

1 The effective weight range limits can be raised or lowered to special order.

2 For emergency only applications it is sometimes possible to exceed the above ratings. Please consult ACE for further details.