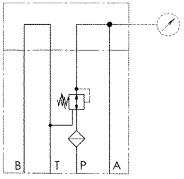


No. 6917F

Pressure control seat valve

for O-ring connection,
max. operating pressure 500 bar,
min. operating pressure 40 bar.



Order no.	Article no.	NG	Input pressure at P max. [bar]	Adjust. pressure at A min. [bar]	Adjust. pressure at A max. [bar]	Q [l/min]	Return line press. at T [bar]	DI-1 Seal Order No.	OR-1 O-ring Order No.	Weight [g]
326504	6917F-3-130	6	500	8	130	6	≤ 20	407205	493478	2100
326785	6917F-3-380	6	500	30	380	12	≤ 20	407205	493478	2100

Design:

Leak-oil-free 3-way pressure regulating valve as flange valve in seat design, directly actuated. With additional oversteer compensation (integrated pressure-limitation function).

The valve mainly consists of three parts:

the spacer plate with the standard hole pattern of NG 6, CETOP 3, the reversing plate and the clamp-in valve. The clamp-in valve is seated in the reversing plate in the P-channel. The oil flow is redirected from the valve inlet P1 to the valve outlet P2 in the reversing plate from P2 to A.

The channels P, T and A must always be present on the opposite flange surface.

The dimensions are recorded in the standards DIN 24340-Form A, CETOP R 35 H and ISO 4401.

Application:

The pressure regulating valve is normally open.

With changing, higher input pressure, it maintains the output pressure largely constant. As soon as the set pressure is reached at the consumer, the valve closes and is sealed leak-proof.

If the pressure between the valve output and the consumer rises above the set overload value, the excess pressure is reduced over the third connection (T-connection).

The valve can be used in front of a directional control valve in the P-channel or behind a directional control valve in the A and/or B-channel.

Features:

The controlled pressure and overload pressure are set simultaneously with an adjusting screw. The overload pressure is always about 10 bar above the regulation pressure.

Protection against outside force and puncturing of the valve.

The valve flow regulates P1 to P2.

The inlet P1 is protected against coarse contamination by a filter element with the nominal filter mesh of 100 µm.

In the opposite direction (from P2 to P1), the valve can be flowed through freely.

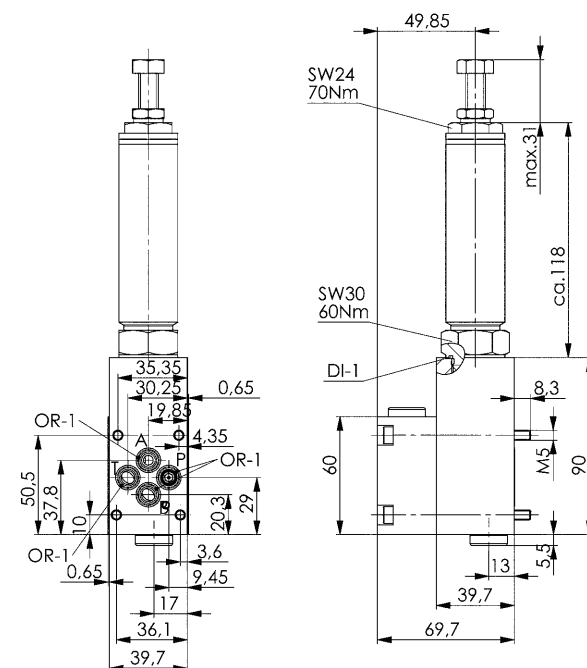
To set and read the pressure, a pressure display device must be installed at the valve outlet.

Pressure is adjusted with an adjusting screw.

The pressure setting can be sealed.

Note:

Observe mounting instructions.



CAD

Subject to technical alterations.