

## No. 6209MZ

### Height adjustment element

Mechanical clamping.  
Tempered steel, plasma-nitrided.



Order no.	Size	Supporting force	Tightening torque Md max.	Weight
		[kN]	[Nm]	[Kg]
554058	K10	12	30	3,5
558903	K20	20	30	6,9

#### Application:

The height counterbalance element is used to clamp a workpiece distortion-free, beginning with the fourth support point. The element attaches itself by spring force and is then fastened by turning the clamping screw. The height counterbalance element is normally extended.

This element can also be used as a support element to prevent bending and vibration of the workpieces.

#### Advantage:

Simple, quick and flexible clamping of complex workpiece contours on the machine table. Particularly suitable for levelling workpieces or clamping fixtures at the necessary machine heights in the machine tool for clamping these securely.

#### Note:

The fastening bolts are supplied as standard.

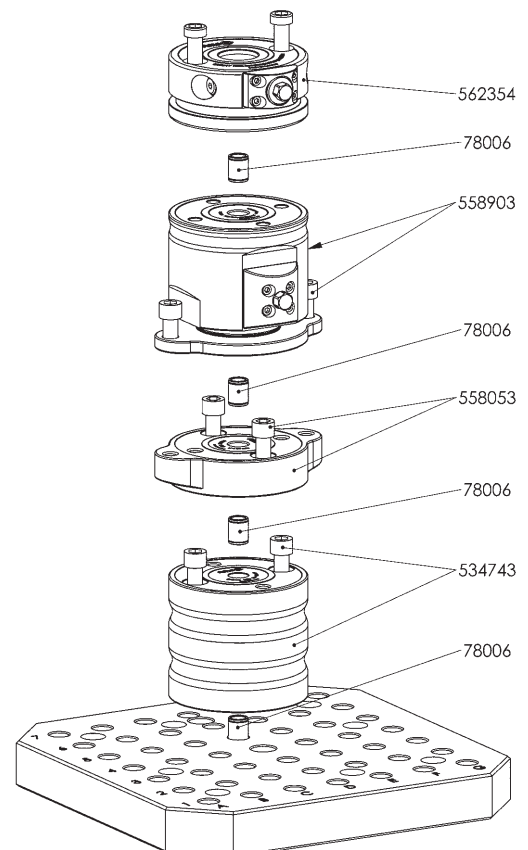
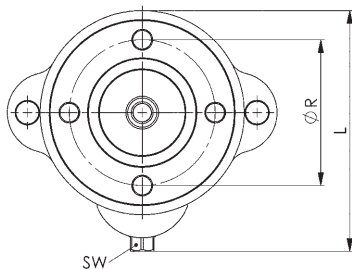
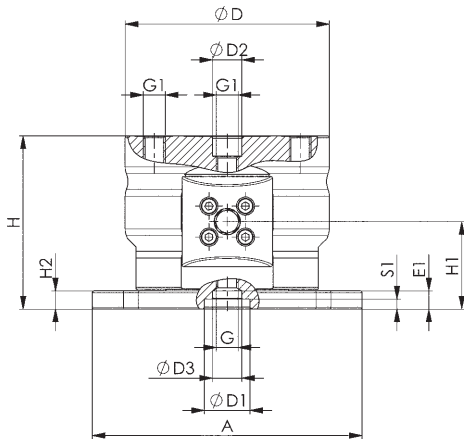
Order number of the centring sleeves:

- size K10: order no. 535732 and 430223

- size K20: order no. 78006

#### Dimensions:

Order no.	Size	A	dia. D	dia. D1 0/+0,01	dia. D2 F7	dia. D3	E1	G	G1	H	H1	H2	L	ØR	SW	S1
554058	K10	105	78	25	15	-	-	M12	M8	95-105	48	10	96	50	10	5,5
558903	K20	148	112	25	16	16	10	M12	M12	95-105	48	10	132	80	13	5,5



Subject to technical alterations.

