

## No. 6209MZA

### Adapter for height compensation

Tempered steel, plasma-nitrided.

Order no.	Size	H ±0.01	Weight [g]
558052	K10	20	753
558053	K20	30	2306

#### Application:

Adapter for installation of the height counterbalance element to an intermediate or base element.

#### Advantage:

Simple, quick and flexible clamping of complex workpiece contours on the machine table. Particularly suitable for levelling workpieces or clamping fixtures at the necessary machine heights in the machine tool for clamping these securely.

#### Note:

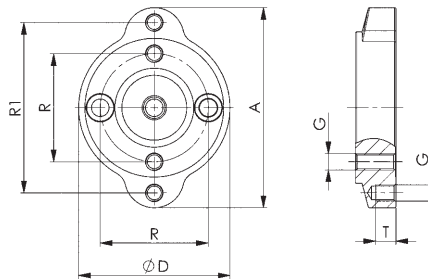
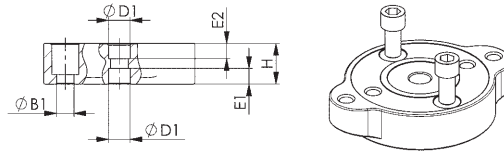
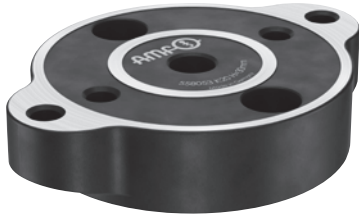
The adapter can be aligned axially on the intermediate or base element using the centring sleeve and then bolted on.

The fastening bolts are supplied as standard.

Order numbers of the centring sleeves:

- size K10: order no. 535732 and 430223

- size K20: order no. 78006



#### Dimensions:

Order no.	Size	A	dia. B1	dia. D	ØD1 F7	Screw DIN84 or ISO4762	E1	E2	G	R	R1	T
558052	K10	105	9	78	15	M8x30	5,0	13,00	M8	50	88	11
558053	K20	148	13	112	16	M12x25	11,5	11,25	M12	80	126	15



CAD