

## No. 6210FN

### Base element, round, for T-slot plate

Tempered steel, plasma-nitrided and burnished.



Order no.	Size	H ±0.01	Weight [g]
559095	K10	30	1554
559096	K20	30	3080

#### Application:

The main element can be freely positioned and fastened on the machine table with T-slots at the circumferential clamping rim. Intermediate elements or assembly elements can be adapted. This clamping system can be used to move workpieces to the required machining height in the machine for 5-sided machining, or for the safe and quick clamping of workpieces with ledges and different clamping heights on the machine table with T-slots.

#### Advantage:

Simple, quick and flexible clamping of complex workpiece contours on the machine table. Especially suitable for levelling workpieces or clamping fixtures at the necessary machine heights in the machine tool and for the reliable clamping of same.

#### Note:

Centring sleeves:

- Ø15: order no. 535732
- Ø16: order no. 78006

Spring washer

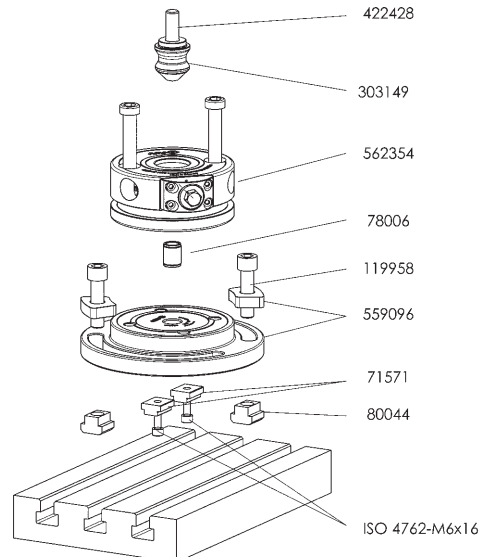
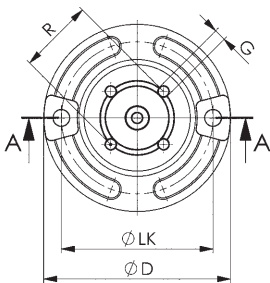
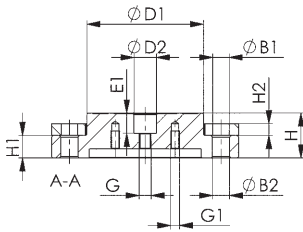
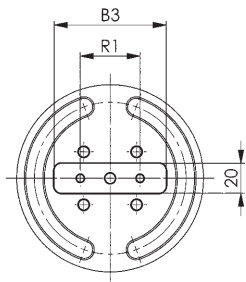
- order no. K10 = 559140
- order no. K20 = 535757.

T-nut no. 6322A with cylinder screws

ISO 4762-M6x10 can be used for positioning on a T-slot plate.

#### Dimensions:

Order no.	Size	dia. B1	dia. B2	B3	dia. D	dia. D1	ØD1 F7	E1	G	G1	H1	H2	dia. LK	R	R1
559095	K10	11,0	11,5	75	125	78	15	13,5	5 x M8	2 x M6	15	8	102	50	40
559096	K20	13,5	13,0	95	166	112	16	11,5	5 x M12	2 x M6	15	10	140	80	53



CAD



Subject to technical alterations.