

No. 6210H-10-05

Adapter clamping module K5, hydr. to K10

Housing: tempered steel, gas-nitrided and oxidised.
Clamping module: cover and piston hardened.



Order no.	Size	Pull-in/locking force up to	Holding force*	Weight
		[kN]	[kN]	[g]
534776	K05	5	13	2328

Application:

The adapter element is used to reduce the intermediate element size K10 to the hydraulic clamping module K5. Workpieces or fixtures can be clamped with repetition accuracy directly onto the hydraulic clamping module K5 using pull-studs.

This clamping system can be used to move workpieces to the required machining height in the machine for 5-sided machining, or for the safe and quick clamping of workpieces with ledges and different clamping heights on the machine table.

Advantage:

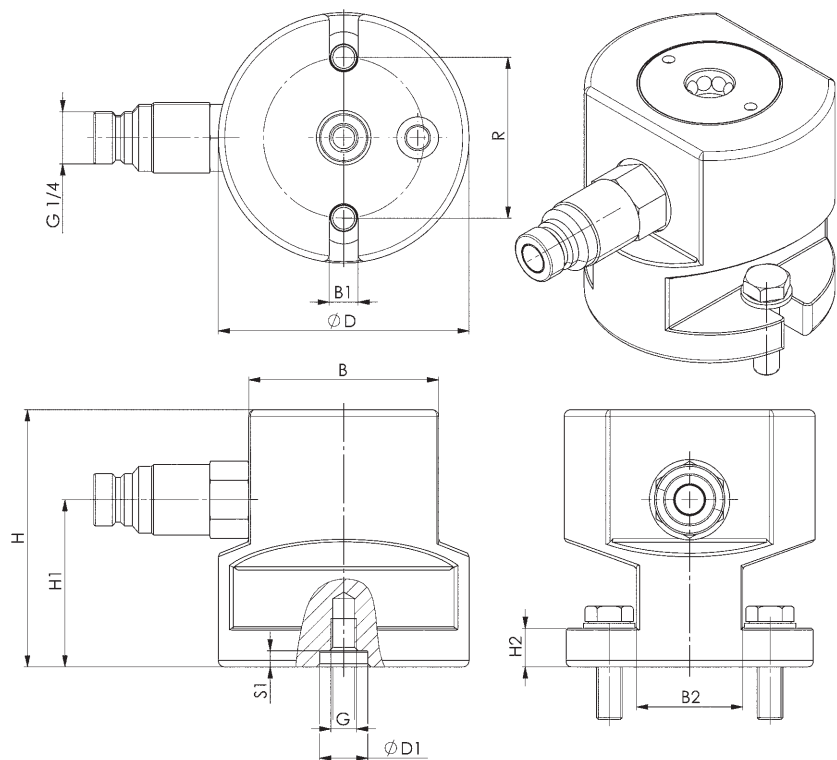
Simple, quick and flexible clamping of complex workpiece contours on the machine table. Especially suitable for levelling workpieces or clamping fixtures at the necessary machine heights in the machine tool and for the reliable clamping of same.

Note:

Order no. for the centering sleeve \varnothing 16 mm: 78006

The hydr. quick-release coupling, connector version, and the fastening screws are supplied as standard.

* Please observe the installation instructions.



Dimensions:

Order no.	Size	B	B1	B2	dia. D	ØD1 F7	G	H ±0.01	H1	H2	R	S1
534776	K05	59	9	33	78	15	M8	80	52	12	50	5



CAD

Subject to technical alterations.