

No. 6210S

Support element, fixed

Housing: tempered steel, gas-nitrided and oxidised.

Order no.	Size	H ±0.01	Weight [g]
532390	K10	100	995
532374	K20	100	1790

Application:

The support element allows workpieces or fixtures to be received into the bore for the pull-stud, K10 or K20 depending on the version, and clamped to the main or intermediate elements. This clamping system can be used to move workpieces to the required machining height in the machine for 5-sided machining, or for the safe and quick clamping of workpieces with ledges and different clamping heights on the machine table.

Advantage:

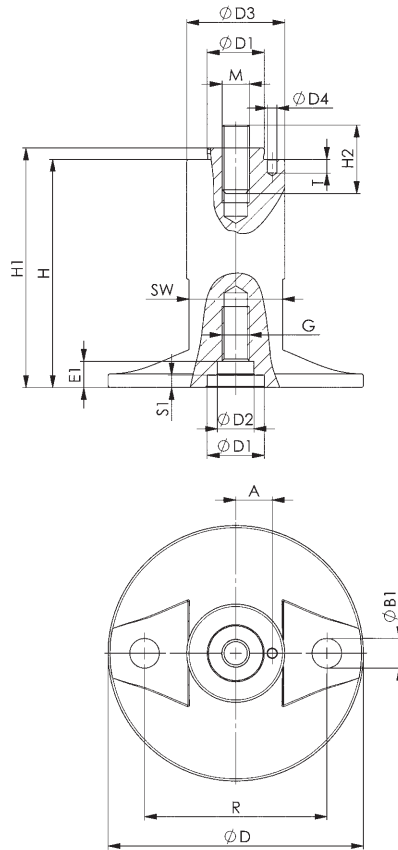
Simple, quick and flexible clamping of complex workpiece contours on the machine table. Especially suitable for levelling workpieces or clamping fixtures at the necessary machine heights in the machine tool and for the reliable clamping of same.

Note:

Two fastening bolts and a threaded stud are supplied as standard.

Order numbers of the centring sleeves

- Ø15: order no. 535732
- Ø16: order no. 78006
- Ø22: order no. 78238



Dimensions:

Order no.	Size	A	dia. B1	dia. D	dia. D1 0/+0,01	dia. D2 F7	dia. D3	dia. D4	E1	G	H1	H2	M	R	S1	SW	T
532390	K10	10	9	78	-	15	35	3,1	-	M8	103	20	M8	50	5	30	6
532374	K20	16	13	112	25	16	43	4,1	12,0	M12	105	30	M12	80	6	41	6

CAD



Subject to technical alterations.