

No. 6214M-01

Clamping module, mechanical, screw-in version

Mechanical opening.
Housing and piston hardened.
Repetition accuracy < 0.1 mm.



CAD

Order no.	Size	Pull-in/locking force up to	Holding force*	Weight
		[N]	[N]	[g]
559090	K01	100	1000	26

Application:

Mechanical zero point clamping system for set-up-time-optimised clamping during non-cutting machining.

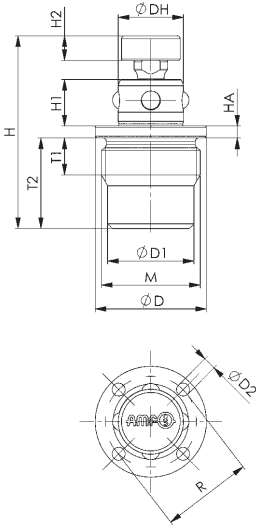
Note:

The mechanical zero-point clamping system is opened by pressing the actuator knob with hand force. Interlock is achieved mechanically via spring force. A tool is not required for this. The base plate serves as the contact surface, into which the clamping module is screwed. An extended actuating pin with a height of 20 mm is available under the order no. 561391. A suitable mounting tool is available under the order no. 559439. Order numbers of the clamping sleeves: 559092 and 559093.

* Please observe the installation instructions.

On request:

- Installation diagrams



Accessories



No. 6214M-01-04, page 134 No. 6214ZN-01-01, page 123 No. 6214ZN-01-02, page 123

Dimensions:

Order no.	Size	dia. D	dia. D1	dia. D2	ØDH	H	H1	H2	HA	M	R	T1	T2
559090	K01	18	14	2,1	10,6	28,2 - 31,3	7,55	4	1,95	M16 x 1	14,75	6	14,7



Subject to technical alterations.