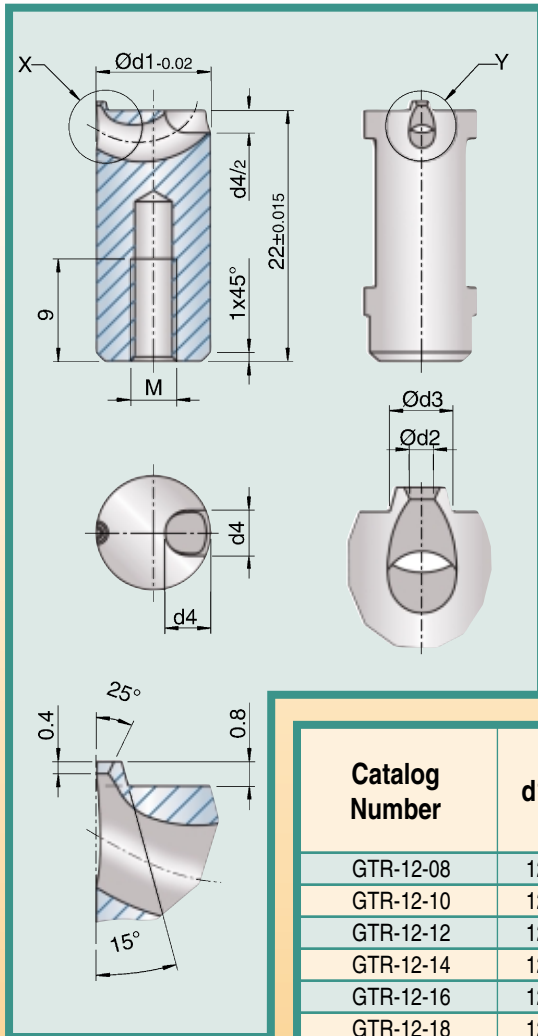




Cashew Gate Inserts

Ø 12mm

For shot weights up to 68g



Actual Size

External View

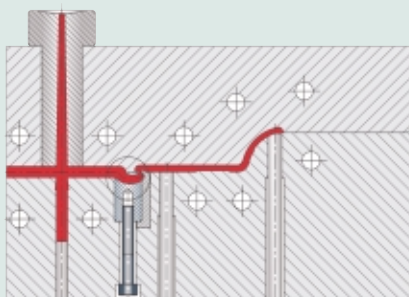
Cutaway View

- Manufactured in a solid one-piece unit using the Metal Injection Molding (MIM) process.
- Optimal balancing of cavity filling due to the exactness of MIM.
- Hardened to 60HRC and polished.
- Anti-rotation locking molded into all round inserts. However in most cases the insert is adequately held by the capscrew.

Catalog Number	d1	d2	d3	d4	M	Viscosity		
						high flowability	regular flowability	low flowability
GTR-12-08	12	0,8	2,1	5	5	8	7	5
GTR-12-10	12	1,0	2,3	5	5	14	12	9
GTR-12-12	12	1,2	2,5	5	5	20	16	10
GTR-12-14	12	1,4	2,7	5	5	30	23	15
GTR-12-16	12	1,6	2,9	5	5	40	30	20
GTR-12-18	12	1,8	3,1	5	5	54	40	27
GTR-12-20	12	2,0	3,3	5	5	68	52	34

Weight in grams

Installation Example



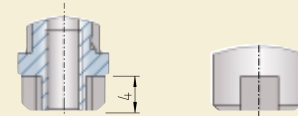
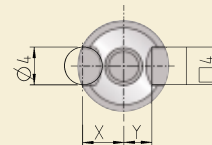
Flat Parts

The front of the cashew gate insert is fully sealed off by a companion raised lip (calotte) machined into the dead-end insert.

- to reduce pressure loss
- to minimize shear



Anti-Rotation Locking Dimensions



Catalog Series	Parallel Pin distance 'X'	Key distance 'Y'
GTR-12	5,2 mm	3,8 mm

CAD files available at:
www.exaflow.com

