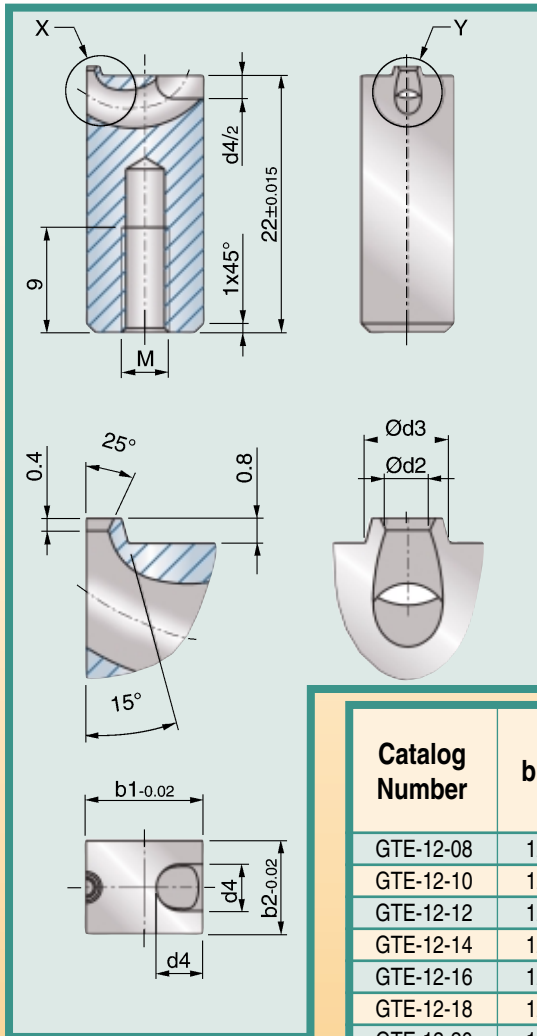




# Cashew Gate Inserts

12mm

For shot weights up to 68g



Actual Size

External View

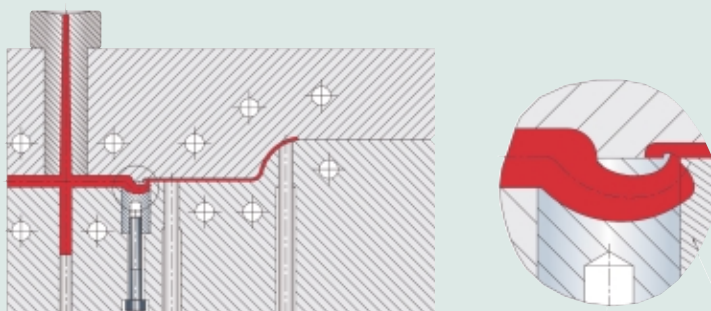
Cutaway View

- Manufactured in a solid one-piece unit using the Metal Injection Molding (MIM) process.
- Optimal balancing of cavity filling due to the exactness of MIM.
- Hardened to 60HRC and polished.
- Ideal for thin wall parts.

Catalog Number	b1	b2	d2	d3	d4	M	Viscosity		
							high flowability	regular flowability	low flowability
GTE-12-08	12	10	0,8	2,1	5	5	8	7	5
GTE-12-10	12	10	1,0	2,3	5	5	14	12	9
GTE-12-12	12	10	1,2	2,5	5	5	20	16	10
GTE-12-14	12	10	1,4	2,7	5	5	30	23	15
GTE-12-16	12	10	1,6	2,9	5	5	40	30	20
GTE-12-18	12	10	1,8	3,1	5	5	54	40	27
GTE-12-20	12	10	2,0	3,3	5	5	68	52	34

Weight in grams

## Installation Example

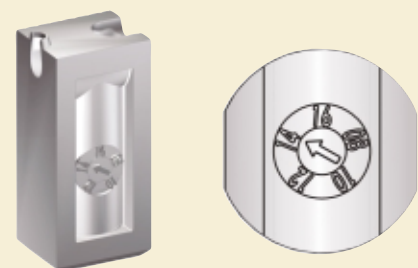


### Thin Walled Parts

The raised lip (calotte) height can be reduced to a maximum of 0.4mm. This is the level of the defined stall edge. The front of the gate insert is sealed off by the cavity to the level of the parting line.

- to reduce pressure loss
- to minimize shear

All inserts have the gate diameter 'd2' molded into them.



CAD files available at:  
www.exaflow.com

