

# BALL CAGE, SMALL DIMENSION

## GUIDE BUSH FOR BALL BEARING, SMALL DIMENSION



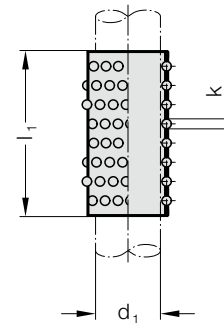
**Material:**

Cage: Brass  
 Balls: Steel hardened (DIN 5401)

**Ordering Code (example):**

Ball cage, small dimension	=	206.51.
Diameter of conduit $d_1$	5 mm =	005.
Length $l_1$	30 mm =	030
Order No	=	206.51. 005. 030

**206.51.**



**206.51. Ball cage, small dimension**

$d_1$	3	4	5	6	8
k	1	1	1	1	1
Total number of balls					
$l_1$					
10	24	30	36	42	
15	40	50	60	70	70
20	56	65	78	78	84
25		80	102	102	112
30		105	126	126	126
35		120	144	144	
40					175



**Material:**

Roller bearing steel 100 Cr 6  
 Hardness: hardened to 60 + 4 HRC  
 Remarks: available in stainless steel on request

**Execution:**

Guide bush bores  $d_2$  fine-honed to IT3

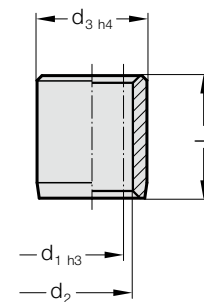
**Note:**

☞ Assembly guide lines / Dimensional requirements and tolerances at the end of chapter D.

**Ordering Code (example):**

Guide bush for ball bearing, small dimension	=	206.54.
Diameter of conduit $d_1$	5 mm =	005.
Length $l_1$	10 mm =	010
Order No	=	206.54. 005. 010

**206.54.**



**206.54. Guide bush for ball bearing, small dimension**

$d_1$	3	4	5	6	8
$d_2$	5	6	7	8	10
$d_3$	7	8	10	11	14
$l_1$					
10	●	●	●		
15	●	●	●	●	●
20	●	●	●	●	●
25		●	●	●	●
30			●	●	●
35				●	●
40					●