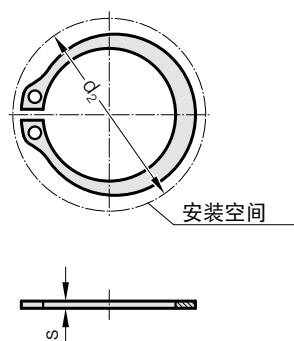
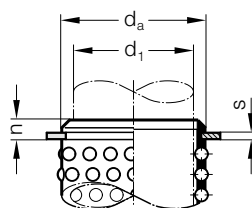


# 安全环 DIN 471

206.72.



安装示例



206.72. 安全环 DIN 471

$d_1$	$d_a \times s$	$d_2$	$d_1$	$d_a \times s$	$d_2$
10	13 x 1	20.2	30	37 x 1.75	49
11	14 x 1	21.4	32	39 x 1.75	51.4
12	15 x 1	22.6	38	45 x 1.75	59.1
15	20 x 1.2	28.4	40	47 x 1.75	60.8
16	21 x 1.2	29.6	48	55 x 2	70.2
18	23 x 1.2	32.2	50	57 x 2	72.6
19	24 x 1.2	33.2	60	67 x 2.5	83.1
20	25 x 1.2	34.2	63	70 x 2.5	87
24	29 x 1.5	39.1	80	90 x 3	108.5
25	30 x 1.5	40.5			

描述:

用于固定滚珠衬套

结构:

根据 DIN 471

订购示例:

安全环 DIN 471 = 206.72.  
 导向装置直径  $d_1$  25 mm = 025  
 订购编号 = 206.72. 025