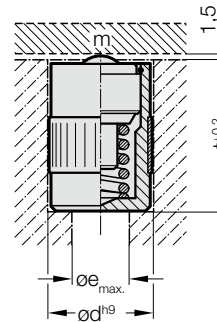


# BALL BEARING INSERT WITHOUT COLLAR

## BALL BEARING INSERT WITH COLLAR



**2198.32.**



**Note:**

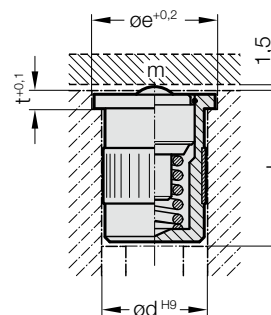
The supporting ball bearings raise the object to be moved (tool) away from the table surface and replace the surface friction with rolling friction. This significantly reduces the force required to move the tool.

**2198.32. Ball bearing insert without collar**

Order No	d	Load capacity	Ball		t
		m [daN]	diameter	e	
2198.32.020	20	25	10	10	30
2198.32.024	24	40	12	14	38
2198.32.030	30	63	15	20	44
2198.32.040	40	100	20	30	53



**2198.33.**



**Note:**

The supporting ball bearings raise the object to be moved (tool) away from the table surface and replace the surface friction with rolling friction. This significantly reduces the force required to move the tool.

**2198.33. Ball bearing insert with collar**

Order No	d	Load capacity	Ball			l
		m [daN]	diameter	e	t	
2198.33.020	20	25	10	25	3.5	31
2198.33.024	24	40	12	30	4	39
2198.33.030	30	63	15	35	5	45
2198.33.040	40	100	20	50	6	54