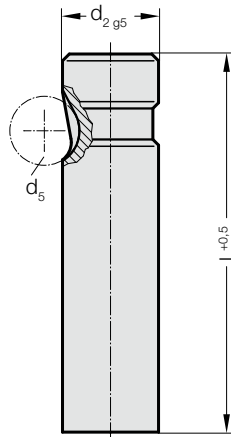


# BALL-LOCK PUNCH, BLANK, HEAVY DUTY

2203.

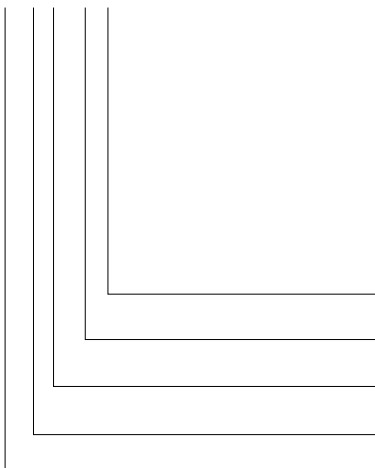


## 2203. Ball-Lock punch, blank, heavy duty

d <sub>2</sub> / Order No	d <sub>5</sub>	l / (Order Code character)	63 (C)	71 (D)	80 (E)	90 (F)	100 (G)	110 (H)	125 (J)	140 (K)	150 (L)	175 (M)	200 (N)
10 / (2)	10		●	●	●	●	●	●	●				
13 / (3)	12		●	●	●	●	●	●	●	●	●	●	
16 / (4)	12		●	●	●	●	●	●	●	●	●	●	●
20 / (5)	12		●	●	●	●	●	●	●	●	●	●	●
25 / (6)	12			●	●	●	●	●	●	●	●	●	●
32 / (7)	12			●	●	●	●	●	●	●	●	●	●
40 / (9)	12				●	●	●	●	●	●	●	●	●

### Ordering Code (example):

**2203.7G**



**Length: l**  
100 mm  
**Diameter: d<sub>2</sub>**  
32 mm  
**Type:**  
heavy  
**Execution:**  
blank  
**Punch:**  
without ejector pin

**Order Code character**  
= (G)  
**Order No**  
= (7)  
**Order No**  
= (3)  
**Order No**  
= (0)  
= 22

### Material:

HSS  
Hardness 62 ± 2 HRC

### Execution:

Shaft fine ground.  
Special dimensions on request.