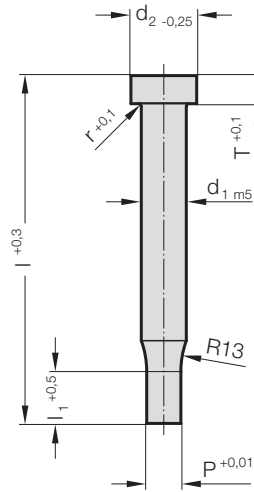


PUNCH, STEPPED, ROUND, ISO 8020



2211.



2211. Punch, stepped, round, ISO 8020

d ₁ / Order No	d ₂	P	l ₁ / Order No	r	T	l / (Order Code character)	71 (D)	80 (E)	90 (F)	100 (G)	120 (J)
3 / (1)	5	0,8 - 2,9	8 (1) 10 (2)	0,25	3		●	●	●	●	●
4 / (2)	6	1 - 3,9	8 (1) 13 (3)	0,25	3		●	●	●	●	●
5 / (3)	8	1,5 - 4,9	13 (3) 19 (4)	0,3	5		●	●	●	●	●
6 / (4)	9	1,6 - 5,9	13 (3) 19 (4)	0,3	5		●	●	●	●	●
8 / (5)	11	2,5 - 7,9	19 (4) 25 (5)	0,3	5		●	●	●	●	●
10 / (6)	13	4 - 9,9	19 (4) 25 (5)	0,3	5		●	●	●	●	●
13 / (7)	16	5 - 12,9	19 (4) 25 (5)	0,4	5		●	●	●	●	●
16 / (8)	19	8 - 15,9	19 (4) 25 (5)	0,4	5		●	●	●	●	●
20 / (9)	23	12 - 19,9	19 (4) 25 (5)	0,4	5		●	●	●	●	●
25 / (10)	28	16,5 - 24,9	19 (4) 25 (5)	0,4	5		●	●	●	●	●
32 / (11)	35	20 - 31,9	25 (5) 30 (6)	0,4	5		●	●	●	●	●

Material:

HSS

Hardness:

Shaft 64 ± 2 HRC

Head 52 ± 5 HRC

ASP 23 - ASP 2023

upon request

Description of FIBRO materials for tool and die components see at the beginning of Chapter E.

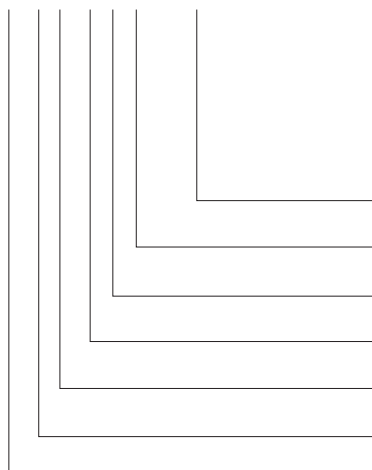
Execution:

Punch head hot upset-forged. Shoulder, shaft and punch diameter fine ground.

Special dimensions on request.

Ordering Code (example):

2211.7G4.0720



Shape: round

P = ∅ 7,2 mm

Punch cutting length: l₁
19 mm

Length: l

100 mm

Diameter: d₁

13 mm

Type:

ISO

Execution:

round

Punch:

without ejector pin

= 0720

Order No

= (4)

Order Code character

= (G)

Order No

= (7)

Order No

= (1)

Order No

= (1)

= 22