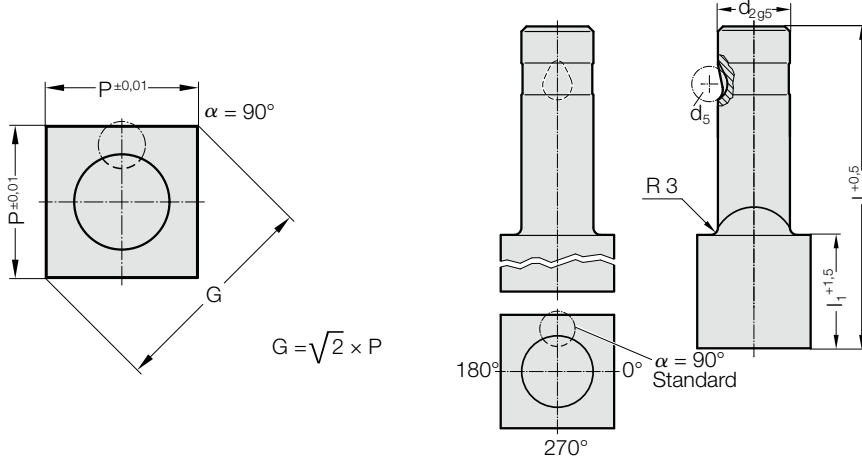


BALL-LOCK PUNCH, PUNCH LARGER THAN SHAFT, SQUARE, LIGHT DUTY

2224.

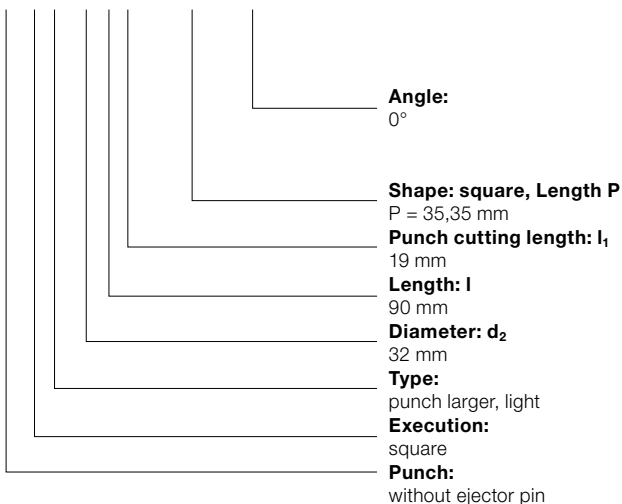


2224. Ball-Lock punch, punch larger than shaft, square, light duty

d ₂ / Order No	d ₅	P _{min}	G _{max}	l ₁ / Order No	l (Order Code character)	80	90	100
						(E)	(F)	(G)
13 / (3)	8	9.19	32	19(2) 30(4)		●	●	●
16 / (4)	8	11.31	38	19(2) 30(4)		●	●	●
20 / (5)	8	14.14	40	19(2) 30(4)		●	●	●
25 / (6)	8	17.68	44	19(2) 30(4)		●	●	●
32 / (7)	8	22.63	50	19(2) 30(4)		●	●	●

Ordering Code (example):

2224.7F2.3535.A



Order Code character
= (A)

= 3535

Order No
= (2)

Order Code character
= (F)

Order No
= (7)

Order No
= (4)

Order No
= (2)

= 22

Material:

HSS

Hardness 62 ± 2 HRC

Execution:

Shaft and punch shape fine ground.
Special dimensions on request.

Note:

With kerf ≤ 0.04 mm, FIBRO rounds off sharp edges if the punch and piercing die bush are ordered together. This reduces the fitting time and the risk of an edge break during operation.