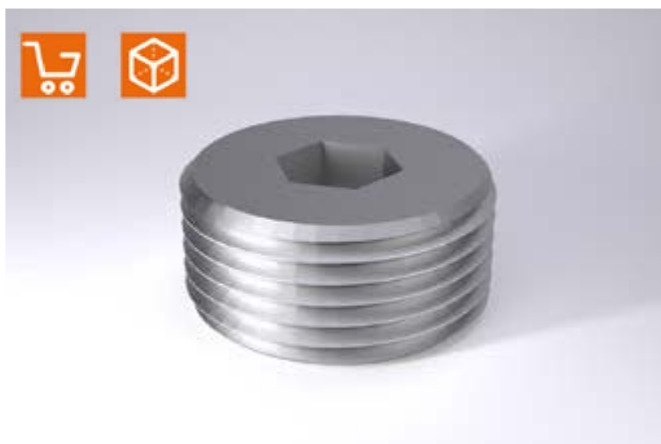
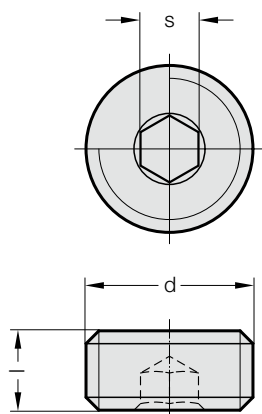
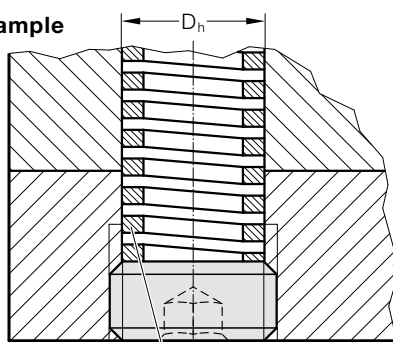


PIPE PLUG (FOR COMPRESSION SPRING ADJUSTEMENT)

241.00.1.



Mounting example



secured with
LOCTITE
Typ 281.243

compression spring to separate
order - see High Performance
Compression Springs

Description:

These set screws can be used as adjustable spring stops. They are available for all customary spring sizes from $\varnothing 10$ to $\varnothing 40$. The set screws are suitable for springs 241.14. to .17.

Their use offers the following advantages:

- Adjustable spring tension from under the bottom bolster, without any dismantling.
- Exchange of springs without dismantling.
- Through-holes instead of blind holes for spring accommodation.

241.00.1. Pipe plug (for compression spring adjustment)

Order No	d	l	s	Spring- \varnothing	D_n
241.00.1.12	M12x1,5	10	6	10	10.5
241.00.1.14	M14x1,5	10	6	12.5	12.5
241.00.1.18	M18x1,5	10	8	16	16.5
241.00.1.22	M22x1,5	10	8	20	20.5
241.00.1.28	M28x1,5	12	10	25	26.5
241.00.1.35	M35x1,5	12	10	32	33.5
241.00.1.42	M42x1,5	12	10	40	40.5