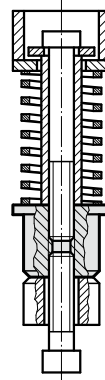
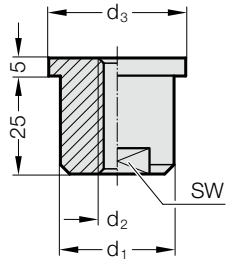


带肩螺栓 调整垫片

244.12.



安装示例



244.12. 带肩螺栓

弹簧 Ø	20	25	32	40
d ₁	20	20	32	32
d ₂	M6	M8	M10	M12
d ₃	25.3	25.3	38	38
SW	15	15	27	27

材料:
Nr. 1.7131, 表面硬化

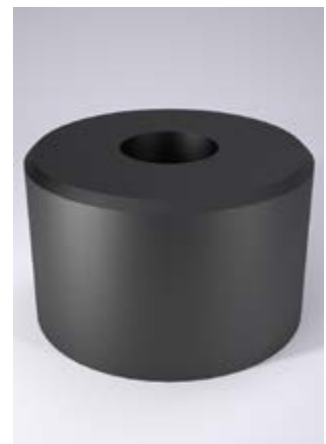
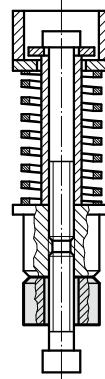
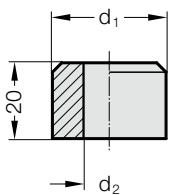
订购示例:

带肩螺栓	=	244.12.
弹簧直径 弹簧 Ø 32 mm	=	32
订购编号	=	244.12. 32

244.13.



安装示例



244.13. 调整垫片

弹簧 Ø	20	25	32	40
d ₁	20	20	32	32
d ₂	7	9	11	14

材料:
Nr. 1.7131

订购示例:

调整垫片	=	244.13.
弹簧直径 弹簧 Ø 32 mm	=	32
订购编号	=	244.13. 32