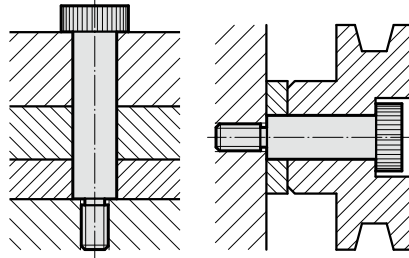


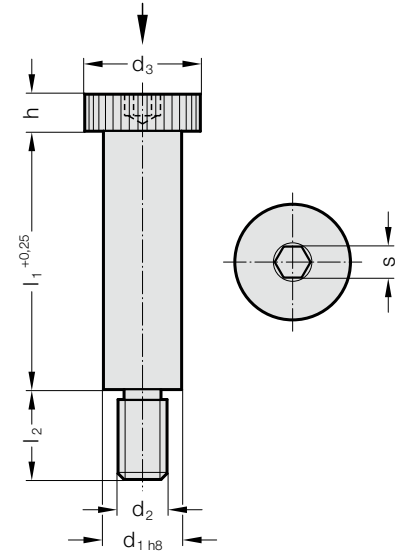
带肩配合螺栓



安装示例



244.17.



材料:
调质钢,
调质到 12.9 ISO 898-1.
结构:
d₁ 已打磨,
头部滚花

244.17. 带肩配合螺栓

	6	8	10	12	16	20	24
d ₁	M5	M6	M8	M10	M12	M16	M20
螺栓的 转矩 [Nm]	7	13	32	65	120	290	500
d ₃	10	13	16	18	24	30	36
h	4.5	5.5	7	9	11	14	16
s	3	4	5	6	8	10	12
l ₂	9.5	11	13	16	18	22	27
l ₁							
10	●	●					
12	●	●					
16	●	●	●	●			
20	●	●	●	●			
25	●	●	●	●	●		
30	●	●	●	●	●	●	
35	●	●	●	●	●	●	
40	●	●	●	●	●	●	●
45			●	●	●	●	●
50		●	●	●	●	●	●
55			●	●	●	●	●
60			●	●	●	●	●
65			●	●	●	●	●
70			●	●	●	●	●
80			●	●	●	●	●
90				●	●	●	●
100				●	●	●	●
120					●	●	●

订购示例:

带肩配合螺栓	=244.17.
公称通径 d ₁	12 mm = 120.
导向装置长度 l ₁	55 mm = 055
订购编号	=244.17. 120.055