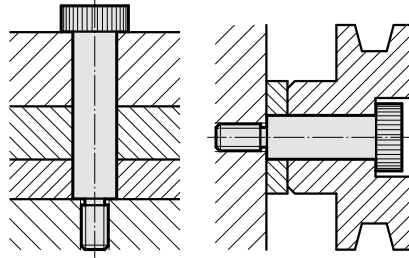


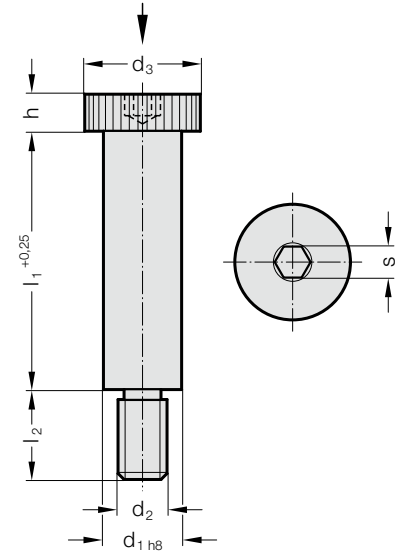
# VIS EPAULÉE



Exemple de montage



244.17.



**Matière :**

Acier de cémentation,  
cémenté suivant 12.9 ISO 898-1.

**Exécution :**

d<sub>1</sub> rectifié,  
tête moletée.

**244.17. Vis epaulée**

	6	8	10	12	16	20	24
d <sub>2</sub>	M5	M6	M8	M10	M12	M16	M20
Couple de serrage de la vis [Nm]	7	13	32	65	120	290	500
d <sub>3</sub>	10	13	16	18	24	30	36
h	4,5	5,5	7	9	11	14	16
s	3	4	5	6	8	10	12
l <sub>2</sub>	9,5	11	13	16	18	22	27
l <sub>1</sub>							
10	●	●					
12	●	●					
16	●	●	●	●			
20	●	●	●	●			
25	●	●	●	●	●		
30	●	●	●	●	●	●	
35	●	●	●	●	●	●	
40	●	●	●	●	●	●	●
45			●	●	●	●	●
50		●	●	●	●	●	●
55			●	●	●	●	●
60			●	●	●	●	●
65			●	●	●	●	●
70			●	●	●	●	●
80			●	●	●	●	●
90				●	●	●	●
100				●	●	●	●
120					●	●	●

**Exemple de commande :**

Vis epaulée	=	244.17.
Diamètre nominal d <sub>1</sub>	12 mm =	120.
Longueur de guidage l <sub>1</sub>	55 mm =	055
N° de commande	=	244.17. 120.055