



CONCERTINA SHROUD FOR GAS SPRINGS

Description:

The concertina shroud protects the piston rod of the gas spring against negative influences, such as e.g.:

- Dirt penetration
- Damage to the surface of the piston rod
- Adhesion of dirt particles
- Drawing in of oil and/or emulsion

The fastening of the folding bellows is internal (on the cylinder tube side) and does not have an interference contour, for example, due to externally attached pipe clamps. In this way, the gas spring can be attached and installed in the tool without limitations.

The concertina shroud for gas springs prolongs the lifetime of the gas springs under rough operating conditions.

Technical data

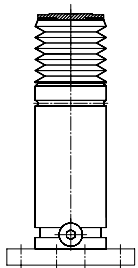
Material :	Concertina shroud:	CSM-Rubber 65 ±3 Shore A
	Washer:	Steel burnished
	Ring:	stainless Steel
Temperature range:		0-90 °C
Chemical resistance	Acids:	very good
	Alkalines:	very good
	Solvent:	adequate
Weather resistance	Sun light (UV):	good
	Ozone:	very good
	Water:	adequate
Oil resistance:	mineral:	good
	synthetic:	adequate

Delivery:

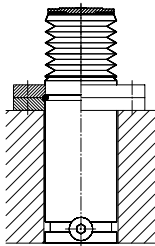
Concertina shroud incl. rotatable disk and countersunk screw.
Custom dimensions/materials available on request.



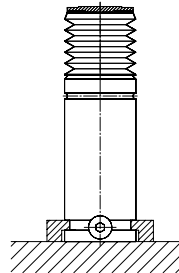
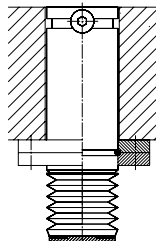
Mounting examples:



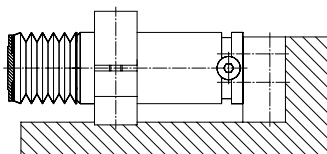
Screw mounted at the base with 2480.011.



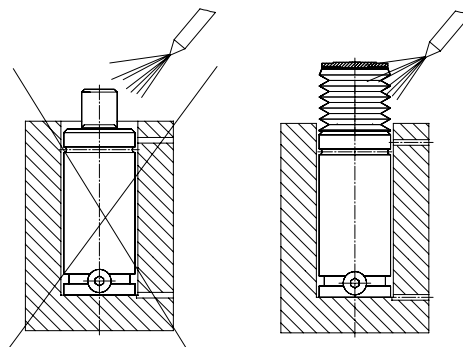
fastened with 2480.055./057./064.



fastened with 2480.007./008.



fastened with 2480.044./045./047.



installed loose in the bore

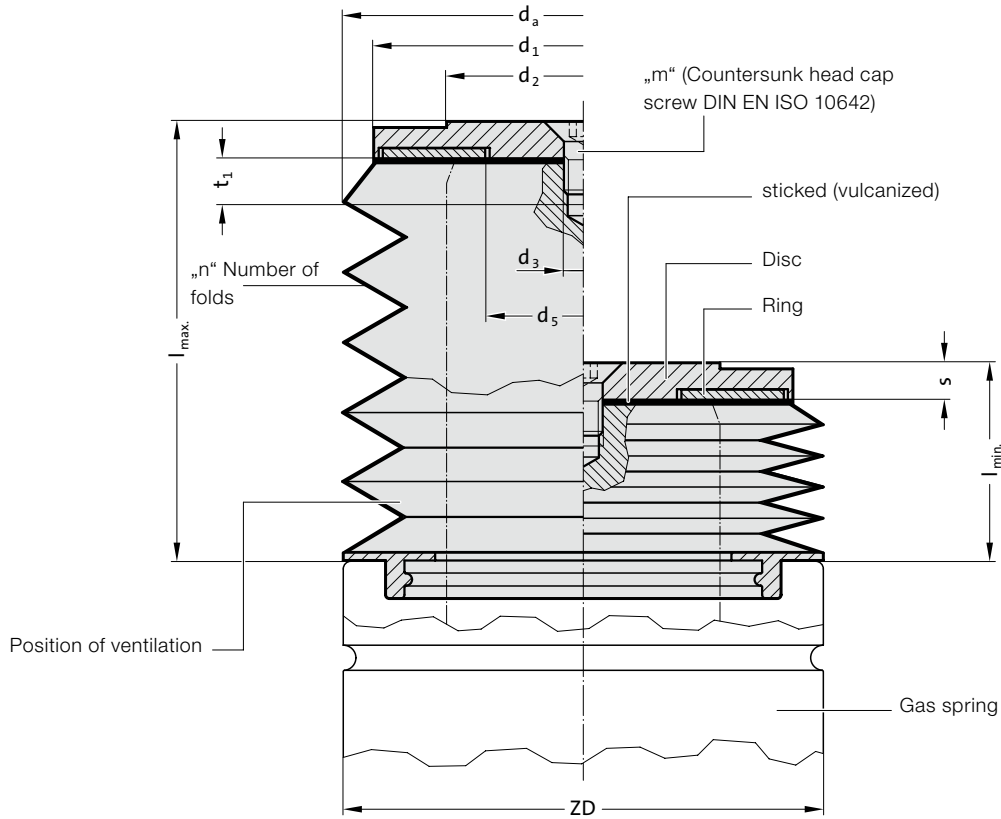


More mounting examples for gas springs see page „Mounting directions for gas springs“



CONCERTINA SHROUD FOR GAS SPRINGS

2480.080.



2480.080. Concertina shroud for gas springs

Type of gas spring	2487.12.00350.	2487.12.00350.	2487.12.00500.	2487.12.00500.	2480.13.00500.	2487.12.00750.1	2487.12.00750.	2488.13.00750.	2480.13.00750.	2487.12.01000.1	2487.12.01000.1	2488.13.01000.	2487.12.01500.	2487.12.01500.	2488.13.01500.	2480.12.01500.	2487.12.02400.	2487.12.02400.	2488.13.02400.	2480.13.03000.	2487.12.04200.	2487.12.04200.	2488.13.04200.	2480.13.05000.	2487.12.06600.	2487.12.06600.	2488.13.06600.	2480.13.07500.	2487.12.09500.	2488.13.09500.
ZD	32	38	45	45	50	45	50	63	63	75	75	95	95	95	120	120	120	150	150	150	120	120	150	150	120	120	150	150	150	150
d _a	45	50	50	55	55	65	65	75	75	75	75	95	95	95	120	120	120	150	150	150	120	120	150	150	120	120	150	150	150	150
d ₁	32	38	45	45	50	50	63	63	75	75	75	95	95	95	120	120	120	150	150	150	120	120	150	150	120	120	150	150	150	150
d ₂ / KD	16	20	20	25	25	28	36	36	36	45	45	50	60	60	65	75	75	80	90	90	60	60	65	65	75	75	80	90	90	90
s	6	6	6	6	6	6	6	6	6	6	6	6	6	6	6	6	6	9	9	9	6	6	6	6	6	6	9	9	9	9
d ₃	6,6	6,6	6,6	6,6	9	6,6	6,6	9	6,6	9	6,6	9	9	9	9	9	9	17	17	17	9	9	9	9	9	9	17	17	17	17
d ₅	10	14	14	17	17	20	28	28	28	37	37	42	51	51	57	66	66	71	81	81	42	42	51	51	57	66	66	71	81	81
t ₁	5	5	10	5	10	5	5	10	5	10	5	10	5	10	5,5	10	5,5	20	5,5	5,5	10	10	10	10	10	5,5	5,5	20	5,5	5,5
m	M6×8	M6×8	M6×12	M6×8	M8×12	M6×10	M6×10	M8×12	M6×10	M6×10	M8×12	M8×12	M8×12	M8×12	M8×12	M8×12	M8×12	M16×25	M8×12	M8×12	M8×12	M8×12	M8×12	M8×12	M8×12	M8×12	M16×25	M8×12	M8×12	M8×12
Stroke	125 (Stroke ≤ 125)																300 (Stroke > 125), not for 2487.12.*													
l _{min}	28	28	28	28	28	28	28	28	28	28	28	28	28	28	28	23	23	24	21	21	23	23	23	23	23	23	24	21	21	21
l _{max}	133	133	133	133	134	134	134	134	134	134	134	134	134	134	134	134	134	137	134	134	134	134	134	134	134	134	137	134	134	134
n	10	10	10	10	10	10	10	10	10	10	10	10	10	10	8	8	6	6	5	5	8	8	6	6	6	6	5	5	5	5
Stroke	300 (Stroke > 125), not for 2487.12.*																300 (Stroke > 125), not for 2487.12.*													
l _{min}	-	-	-	-	52	--*/52	--*/52	52	--*/52	54	--*/54	41	--*/41	37	--*/34	-	-	-	-	-	-	-	-	-	-	-	-	-	-	-
l _{max}	-	-	-	-	309	309	309	309	309	309	309	309	309	309	309	309	309	402	309	309	309	309	309	309	309	309	402	309	309	309
n	-	-	-	-	22	--*/22	--*/22	22	--*/22	19	--*/19	14	--*/14	11	--*/11	-	-	-	-	-	-	-	-	-	-	-	-	-	-	-

Ordering Code (example):

Concertina shroud	= 2480.080.	Concertina shroud	= 2480.080.
ZD = 120 mm	= 120.	ZD = 120 mm	= 120.
d ₂ /KD = 65 mm	= 065.	d ₂ /KD = 65 mm	= 065.
Stroke = 125 (Stroke ≤ 125 mm)	= 125	Stroke = 300 (Stroke > 125 mm)	= 300
Order No.	= 2480.080.120.065.125	Order No.	= 2480.080.120.065.300