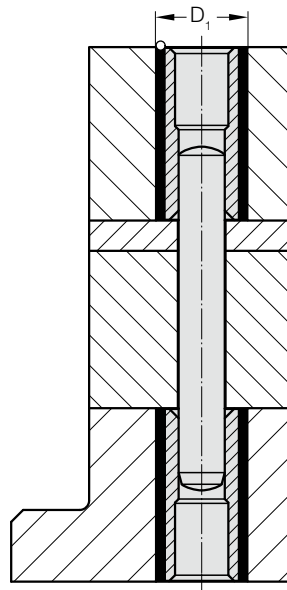
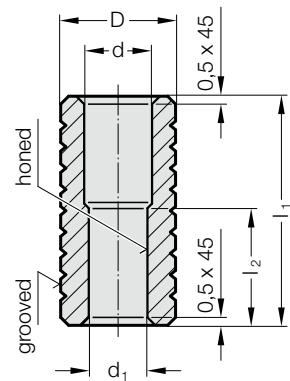


LINER BUSH FOR DOWEL PIN, FOR BONDING



265.1.



Description:

Dowel liner bushes are used where precisely positioned, unhardened parts are often changed or must be replaced, e.g. in precision tool construction.

Material:

WS
Hardness 54 ± 2 HRC

Epoxy-Bonding:

The jig-ground pin holes of the hardened matrix are joined with the dowel liner bush by means of a dowel pin 235.1. Retainer holes for dowel liner bushes should be approximately 2 mm larger in diameter than the bush O.D. – a coarse finish is desirable. Following exact positioning/aligning, FIBROLIT® ZWO or FIBROFIX® SECHS is used for bonding.

265.1. Liner bush for dowel pin, for bonding

d_1	d	D	D_1	l_1	l_2
6	7	10	12	25	12
8	9	12	14	30	16
10	11	16	18	36	20

Ordering Code (example):

1 Dowel Liner Bush – only –

Dowel Liner Bush	=	265.
Material WS	=	1.
$d_1 = \varnothing 8,0$ mm	=	0800.
Quantity – 1	=	1
Order No	=	265.1.0800.1

Ordering Code (example):

1 Dowel Liner Bush + 1 Dowel pin

Dowel Liner Bush	=	265.
Material WS	=	1.
$d_1 = \varnothing 8,0$ mm	=	0800.
Quantity – 1	=	1.
Dowel length = 40 mm	=	040
Order No	=	265.1.0800.1.040

Ordering Code (example):

2 Dowel Liner Bushes + 1 Dowel pin

Dowel Liner Bush	=	265.
Material WS	=	1.
$d_1 = \varnothing 8,0$ mm	=	0800.
Quantity – 2	=	5.
Dowel length = 50 mm	=	050
Order No	=	265.1.0800.2.050