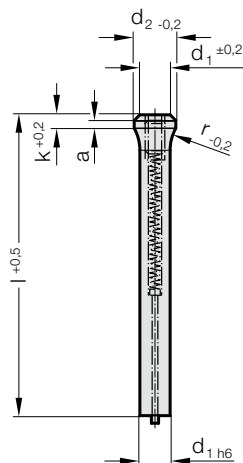


# PUNCH WITH TAPERED HEAD, BLANK, WITH EJECTOR PIN, DIN 5118 SHAPE E

2706.

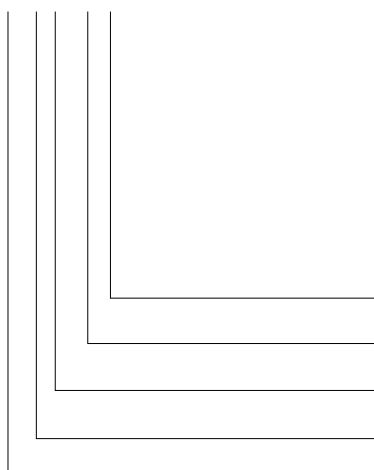


## 2706. Punch with tapered head, blank, with ejector pin, DIN 5118 Shape E

d <sub>1</sub> / Order No	d <sub>2</sub>	a	k	r	l (Order Code character)	71 (D)	80 (E)	90 (F)	100 (G)	120 (J)
5 / (3)	7	1.5	4	10		●	●	●	●	●
6 / (4)	9	1.5	4	10		●	●	●	●	●
8 / (5)	11	1.5	4	12		●	●	●	●	●
10 / (6)	14	1.5	4	15		●	●	●	●	●
13 / (7)	17	1.5	4	15		●	●	●	●	●
16 / (8)	20	1.5	4	15		●	●	●	●	●
20 / (9)	25	1.5	4	15		●	●	●	●	●

### Ordering Code (example):

**2706.7G**



**Length: l**  
100 mm

**Diameter: d<sub>1</sub>**  
13 mm

**Type:**  
with tapered head

**Execution:**  
blank

**Punch:**  
with ejector pin

**Order Code character**  
= (G)

**Order No**  
= (7)

**Order No**  
= (6)

**Order No**  
= (0)

= 27


### Material:

HSS

Hardness:

Shaft 62-66 HRC

Head 45-55 HRC

 Description of FIBRO materials for tool and die components see at the beginning of Chapter E.

### Execution:

Shaft precision ground. Head subsequently hot upset-forged and tempered.

### Note:

Matching piloted counterbore 2284.00.

Matching retainer ring 2284.00.01.