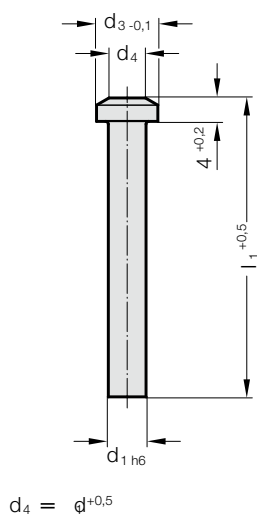


PUNCH SIMILAR TO DIN 9844, SHAPE A

270.



Material:

Tungsten-Cobalt-Carbide

Order No 270.9.

Execution:

Shaft precision ground.

Head: Steel, brazed to shaft or Tungsten-Cobalt Carbide.

Other diameters and lengths on request.

270. Punch similar to DIN 9844, Shape A

Gradation					71	90	112
d_1	d_1	d_3	r	l_1			
1	0.1	3,6	0.2		●	●	●
2.3	0.1	4	0.2		●	●	●
2.6	0.1	4.5	0.3		●	●	●
2.9	0.1	5	0.3		●	●	●
3.3	0.1	6	0.3		●	●	●
3.6	0.1	7	0.3		●	●	●
4.1	0.1	8	0.5		●	●	●
4.6	0.1	8.5	0.5		●	●	●
5.1	0.1	9	0.5		●	●	●
5.5	0.1	9.5	0.5		●	●	●
6	0.1	10	0.5		●	●	●
6.5	0.5	10.8	0.7		●	●	●
7.5	0.5	12	0.7		●	●	●
8.5	0.5	13	0.7		●	●	●
9.5	0.5	14.5	0.7		●	●	●
10.5	0.5	16	1		●	●	●
11.5	0.5	18	1		●	●	●
13	0.5	20	1		●	●	●
15	0.5	22	1		●	●	●

Ordering Code (example):

Punch similar to DIN 9844, Shape A = 270.9.

Shaft diameter d_1 4.7 mm = 0470.

Length l_1 71 mm = 071

Order No = 270.9. 0470. 071