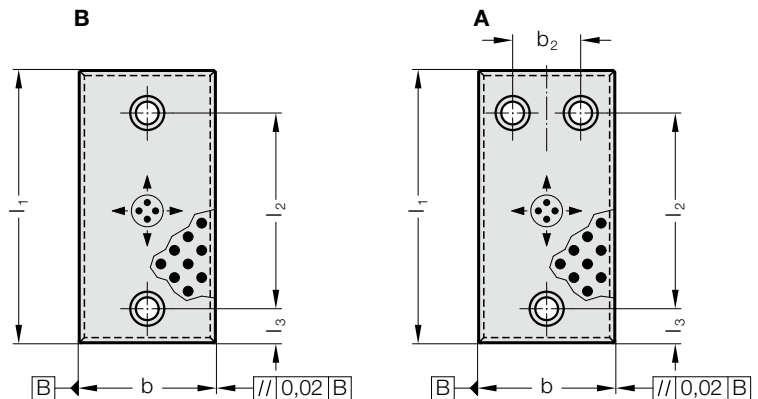


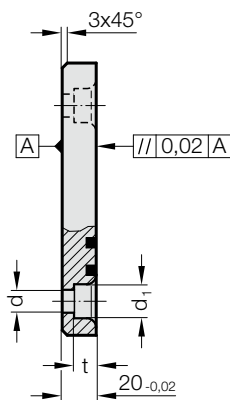
PLACA DE DESLIZAMIENTO, BRONCE CON LUBRICANTE SÓLIDO, SEGÚN LA NORMA WDX



2960.82.25.



2960.82.25.



2960.82.25. Placa de deslizamiento, bronce con lubricante sólido, según la norma WDX

| Código | Forma | b | b ₂ | l ₁ | l ₂ | l ₃ | d | d ₁ | t | Número de orificios |
|--------------------|-------|-----|----------------|----------------|----------------|----------------|------|----------------|----|---------------------|
| 2960.82.25.050.100 | B | 50 | - | 100 | 50 | 25 | 13.5 | 20 | 13 | 2 |
| 2960.82.25.050.125 | B | 50 | - | 125 | 75 | 25 | 13.5 | 20 | 13 | 2 |
| 2960.82.25.050.160 | B | 50 | - | 160 | 110 | 25 | 13.5 | 20 | 13 | 2 |
| 2960.82.25.050.200 | B | 50 | - | 200 | 150 | 25 | 13.5 | 20 | 13 | 2 |
| 2960.82.25.080.100 | B | 80 | - | 100 | 50 | 25 | 13.5 | 20 | 13 | 2 |
| 2960.82.25.080.125 | B | 80 | - | 125 | 75 | 25 | 13.5 | 20 | 13 | 2 |
| 2960.82.25.080.160 | B | 80 | - | 160 | 110 | 25 | 13.5 | 20 | 13 | 2 |
| 2960.82.25.080.200 | B | 80 | - | 200 | 150 | 25 | 13.5 | 20 | 13 | 2 |
| 2960.82.25.080.250 | B | 80 | - | 250 | 170 | 40 | 13.5 | 20 | 13 | 2 |
| 2960.82.25.080.315 | B | 80 | - | 315 | 235 | 40 | 13.5 | 20 | 13 | 2 |
| 2960.82.25.125.100 | A | 125 | 75 | 100 | 50 | 25 | 13.5 | 20 | 13 | 3 |
| 2960.82.25.125.125 | A | 125 | 75 | 125 | 75 | 25 | 13.5 | 20 | 13 | 3 |
| 2960.82.25.125.160 | A | 125 | 75 | 160 | 110 | 25 | 13.5 | 20 | 13 | 3 |
| 2960.82.25.125.200 | A | 125 | 75 | 200 | 150 | 25 | 13.5 | 20 | 13 | 3 |
| 2960.82.25.125.250 | A | 125 | 75 | 250 | 170 | 40 | 13.5 | 20 | 13 | 3 |
| 2960.82.25.125.315 | A | 125 | 75 | 315 | 235 | 40 | 13.5 | 20 | 13 | 3 |
| 2960.82.25.160.100 | A | 160 | 110 | 100 | 50 | 25 | 13.5 | 20 | 13 | 3 |
| 2960.82.25.160.125 | A | 160 | 110 | 125 | 75 | 25 | 13.5 | 20 | 13 | 3 |
| 2960.82.25.160.160 | A | 160 | 110 | 160 | 110 | 25 | 13.5 | 20 | 13 | 3 |
| 2960.82.25.160.200 | A | 160 | 110 | 200 | 150 | 25 | 13.5 | 20 | 13 | 3 |
| 2960.82.25.160.250 | A | 160 | 110 | 250 | 170 | 40 | 13.5 | 20 | 13 | 3 |
| 2960.82.25.160.315 | A | 160 | 110 | 315 | 235 | 40 | 13.5 | 20 | 13 | 3 |

Material:

Bronce con lubricante sólido, de bajo mantenimiento

Nota:

Se suministro sin los tornillos.

Sujeción:

Emplear tornillos Allen cilíndricos DIN EN ISO 4762 M12.