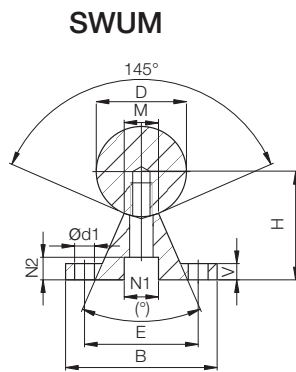


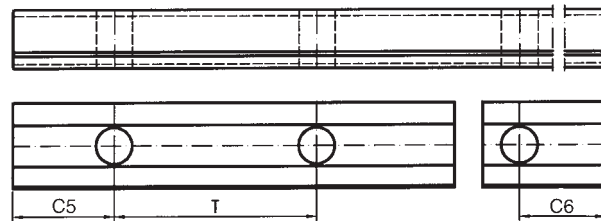
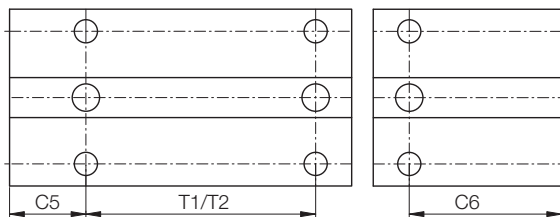
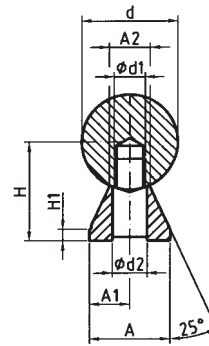


DryLin® Shafts
mm

Phone +49 - 22 03 - 96 49-145
Fax +49 - 22 03 - 96 49-334



SWUMN



Dimensions [mm] – Supported Steel Shafts 1.1213

Part No.	D [mm]	B [mm]	H [mm]	V [mm]	N1 [mm]	N2 [mm]	d1 [mm]	M [mm]	(°)	E [mm]	T1* [mm]	C5/C6		T2 [mm]	C5/C6		Weighth [kg/m]
												min.	max.		min.	max.	
			±0,02								±0,15	for T1			for T2		
												Standard			Standard		
SWUM-12	12	40	22	5	8,0	5,0	4,5	5,8	50	29	75	20	57	120	20	79	1,75
SWUM-16	16	45	26	5	9,5	6,0	5,5	7,0	50	33	100	20	69	150	20	94	2,64
SWUM-20	20	52	32	6	11,0	6,5	6,6	8,3	50	37	100	20	69	150	20	94	3,97
SWUM-25	25	57	36	6	14,0	8,5	6,6	10,8	50	42	120	20	79	200	20	119	5,65
SWUM-30	30	69	42	7	17,0	10,5	9,0	11,0	50	51	150	20	94	200	20	119	7,93
SWUM-40	40	73	50	8	17,0	10,5	9,0	15,0	50	55	200	20	119	300	20	169	12,88
SWUM-50	50	84	60	9	19,0	12,5	11,0	19,0	46	63	200	20	119	300	20	169	19,60

* Two hole pitches are available, T2 (standard) or T1

Dimensions [mm] – Low Level Supported Steel Shafts 1.1213

Part No.	d [mm]	H [mm]	H1 [mm]	A [mm]	A1 [mm]	A2 [mm]	d1 [mm]	d2 [mm]	T [mm]	C5/C6		Weighth [kg/m]
										min.	max.	
			±0,02			±0,02						
SWUMN-12	12	14,5	3	11	5,5	5,4	M4	4,5	75	20	57	1,62
SWUMN-16	16	18	3	14	7,0	7,0	M5	5,5	75	20	57	2,54
SWUMN-20	20	22	3	17	8,5	8,1	M6	6,6	75	20	57	3,81
SWUMN-25	25	26	3	21	10,5	10,3	M8	9,0	75	20	57	5,62
SWUMN-30	30	30	3	23	11,5	11,0	M10	11,0	100	20	69,5	7,63
SWUMN-40	40	39	4	30	15,0	15,0	M12	13,5	100	20	69,5	13,47
SWUMN-50	50	46	5	35	17,5	19,0	M14	15,5	100	20	69,5	20,31

Low level supported shafts are delivered unmounted.

Order example: SWUM-16-500 corresponds to a supported steel shaft ø 16 mm, made from 1.1213, 500 mm long.

