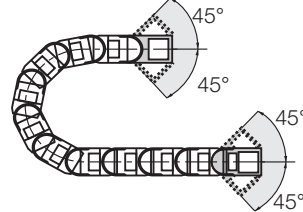


The Standard - Option KMA* - pivoting

- Recommended for unsupported and gliding applications
- Confined installation conditions
- Option - integrated C-profile strain relief device with Chainfix clip or strain relief tiwrap plates
- Corrosion resistant
- Universal mountable with attachment capability on all sides

*KMA = Polymer Metal Mounting Bracket

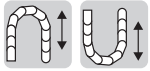
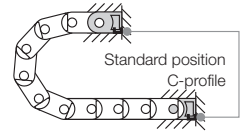
Moving end
50500/98500...1



Fixed end
50500/98500...2



The attachment variants arising automatically by the choice of the KMA mounting bracket



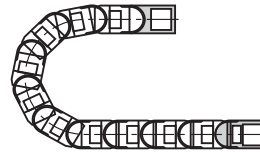
Option KMA - locking

- Recommended for vertical hanging / standing applications

Additionally:

- Universal mountable
- C-profile option
- Corrosion resistant
- Locked connections
- At very high acceleration

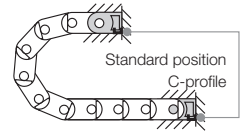
Moving end
51500/99500...1



Fixed end
51500/99500...2

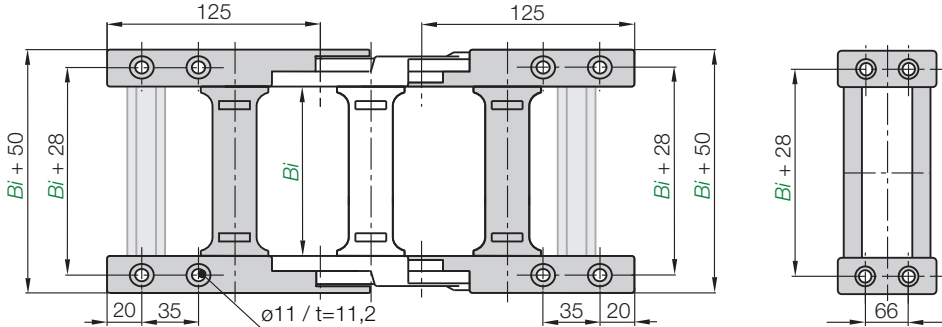


The attachment variants arising automatically by the choice of the KMA mounting bracket



Fixed end
50500/98500...2 (pivoting)
51500/99500...2 (locking)

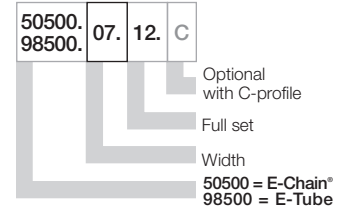
Moving end
(pivoting) 50500/98500...1
(locking) 51500/99500...1



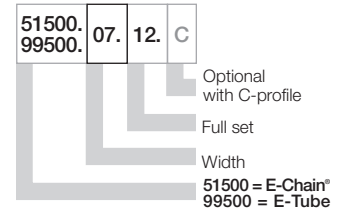
Width index	Part No. full set pivoting	Part No. full set locking	C-profile option [mm]	Bi	Width index	Part No. full set pivoting	Part No. full set locking	C-profile option [mm]	Bi
.05.	50500	51500	.05.12. C	50	.31.	50500	51500	.31.12. C	312
.06.	50500	51500	.06.12. C	65	.32.	50500	51500	.32.12. C	325
.07.	50500/98500	51500/99500	.07.12. C	75	.33.	50500	51500	.33.12. C	337
.08.	50500	51500	.08.12. C	87	.35.	50500/98500	51500/99500	.35.12. C	350
.10.	50500/98500	51500/99500	.10.12. C	100	.36.	50500	51500	.36.12. C	362
.11.	50500	51500	.11.12. C	112	.37.	50500	51500	.37.12. C	375
.12.	50500/98500	51500/99500	.12.12. C	125	.38.	50500	51500	.38.12. C	387
.13.	50500	51500	.13.12. C	137	.40.	50500/98500	51500/99500	.40.12. C	400
.15.	50500/98500	51500/99500	.15.12. C	150	.41.	50500	51500	.41.12. C	412
.16.	50500	51500	.16.12. C	162	.42.	50500	51500	.42.12. C	425
.17.	50500	51500	.17.12. C	175	.43.	50500	51500	.43.12. C	437
.18.	50500	51500	.18.12. C	187	.45.	50500	51500	.45.12. C	450
.20.	50500/98500	51500/99500	.20.12. C	200	.46.	50500/98500	51500/99500	.46.12. C	462
.21.	50500	51500	.21.12. C	212	.47.	50500	51500	.47.12. C	475
.22.	50500	51500	.22.12. C	225	.48.	50500	51500	.48.12. C	487
.23.	50500	51500	.23.12. C	237	.50.	50500	51500	.50.12. C	500
.25.	50500/98500	51500/99500	.25.12. C	250	.51.	50500	51500	.51.12. C	512
.26.	50500	51500	.26.12. C	262	.52.	50500	51500	.52.12. C	525
.27.	50500	51500	.27.12. C	275	.53.	50500	51500	.53.12. C	537
.28.	50500	51500	.28.12. C	287	.55.	50500	51500	.55.12. C	550
.30.	50500/98500	51500/99500	.30.12. C	300	.60.	50500	51500	.60.12. C	600

Dimensions and order configurations

Part No. structure (pivoting)



Part No. structure (locking)



Full set, for both ends:

50500.07.12

Single-part order:

50500.07.1

Mounting bracket moving end

50500.07.2

Mounting bracket fixed end

