



igubal® PK..M | Adapter Bolts | mm

PK..M

mm

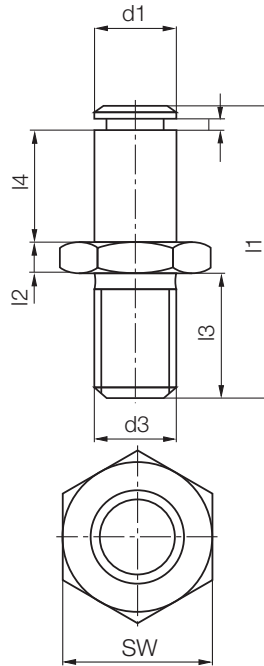
Adapter Bolts

Phone +49 - 22 03 - 96 49-145
 Fax +49 - 22 03 - 96 49-334

igus® GmbH
 51147 Cologne

Internet www.igus.de
 E-mail info@igus.de

51.26



Data in mm

Structure – part no.

P K ... M-05



Dimension

Metric

Thread

L = L.-hand thread

R = R.-hand thread

Serie

Design



Material

POM

▶ Page 70.8

igubal® – Adapter Bolts

Solid polymer bolts with a hexagonal head are an accessory to the series K rod ends. The plain shank fits into the inside diameter of the spherical ball and is secured by a circlip.

The igubal® adapter bolts consist of highly shock-resistant, long-fibre reinforced polymer POM.

The most significant properties

- Lightweight
- Excellent corrosion resistance
- Designed for use with K series rod ends
- High strength under impact loads
- Vibration dampening
- Easy to fit
- Available in left and right hand threads

Load Data and Dimensions [mm]

igubal® – Adapter Bolts

Part Number		Max. static tensile strength		Max. radial load		d3	l1	l4	l3	l2
R.-hand thread	L.-hand thread	Short term	Long term	Short term	Long term	[mm]	Width-across flats [mm]	Length adjusting bolt [mm]	Thread length [mm]	Nut width [mm]
PKRM-05	PKLM-05	100	50	200	100	5	25,0	8,5	11,3	2,7
PKRM-06	PKLM-06	150	75	250	125	6	28,0	9,5	12,8	3,2
PKRM-08	PKLM-08	250	125	400	200	8	32,0	12,5	12,5	4,0
PKRM-10	PKLM-10	500	250	600	300	10	37,5	14,5	14,5	5,0
PKRM-12	PKLM-12	700	350	900	450	12	42,0	16,5	15,5	6,0
PKRM-14	PKLM-14	800	400	1100	550	14	47,0	19,5	15,5	7,0
PKRM-16	PKLM-16	900	450	1400	700	16	52,0	22,0	16,5	8,0
PKRM-18	PKLM-18	800	400	1700	850	18	59,0	24,0	20,5	9,0
PKRM-20	PKLM-20	500	250	2200	1100	20	67,0	26,0	25,0	10,0

Available from stock