

TAPPO CONICO

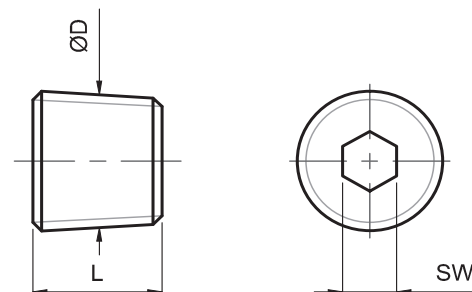
CONICAL PLUG

HEGELVERSCHLUSSSCHRAUBE

ETP

Materiale: ETP-A Acciaio brunito
Material: ETP-A Burnished steel
Werkstoff: ETP-A Brünierter Stahl

Materiale: ETP-O Ottone
Material: ETP-O Brass
Werkstoff: ETP-O Messing



D	COD	L	SW
1/8" GAS	ETP-A	9,5	3/16"
1/4" GAS	ETP-A	12,7	1/4"
3/8" GAS	ETP-A	14,3	5/16"
1/2" GAS	ETP-A	17,4	3/8"
1/8" GAS	ETP-O	8	5,1
1/4" GAS	ETP-O	10	7,1
3/8" GAS	ETP-O	10	8,1
1/2" GAS	ETP-O	10	10,1

Esempio di ordinativo: Codice x D **Order example:** Code x D **Bestellbeispiel:** Code x D