

Cable management

Cable routing 482.6 mm (19")



Fibre-optic cable management panel, 1 U

482.6 mm (19")

The four fibre-optic cable shunting rings integrated into the front permit optimum management of up to 48 fibres.

Material:

Panel: Sheet steel
Ring: 2 K plastic

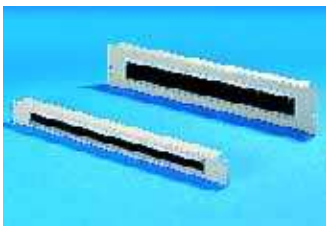
Colour:

Panel: RAL 7035
Cable shunting ring external: RAL 7035,
black interior

U	Model No. DK
1	7256.035

→ Possible alternative:

Fibre-optic support guide DK 7116.500, see page 1071.



Cable entry panel

482.6 mm (19")

Cut-out 390 x 40 mm (2 U) or 390 x 20 mm (1 U) with brush insert. With accommodation facility for cable clamp straps DK 7610.000 or DK 7611.000.

Material:

Sheet steel

Colour:

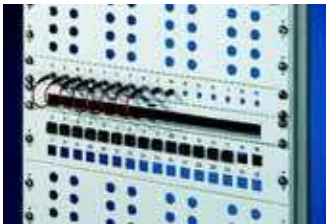
RAL 7035

U	Model No. DK
1	7140.535
2	7150.535

Other versions available on request.

+ Accessories:

Cable clamp strap, see page 1070.



Cable routing across the 482.6 mm (19") mounting level

There is a choice of five different cable clamping systems for system-compatible cable routing in 482.6 mm (19") systems with one or two pairs of mounting angles:

C rail

for fastening across all 482.6 mm (19") mounting angles.

C rail	Depth in mm	Model No. DK
482.6 mm (19") level	-	7016.100

Cable clamp rails

for fastening across all 482.6 mm (19") mounting angles, for cable ties.

Cable clamp rail	Depth in mm	Model No. DK
482.6 mm (19") level	-	7016.110

Cable clamp straps for swing frames, large, and Data Rack

The cable clamp straps are mounted on frame at the rear, whilst the cables are clamped 250 mm behind the 482.6 mm (19") mounting angles.

Cable clamp strap for	Depth in mm	Model No. DK/FR
Data Rack and large swing frame	250	7016.120
DK-TS mounting angles	100	7016.130

Cable clamp straps for DK-TS mounting angles with side lugs for suspending from the cranked 482.6 mm (19") mounting angles. Cable clamping is via cable ties.

Packs of 6

! Also required:

With L-shaped TS mounting angles, adaptor DK 7827.300 is additionally required, see page 1023.

Cable routing 482.6 mm (19")



B
7.8