

Combi-Säulengestelle mit unten stehenden Säulen

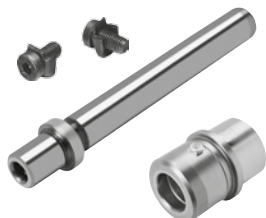
Combi-die sets with down-mounted columns

Combi-blocs à colonnes avec colonnes montées en bas

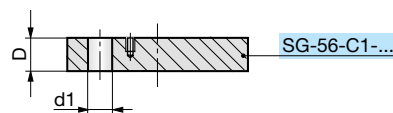
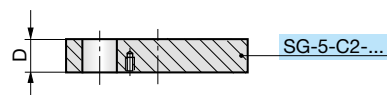
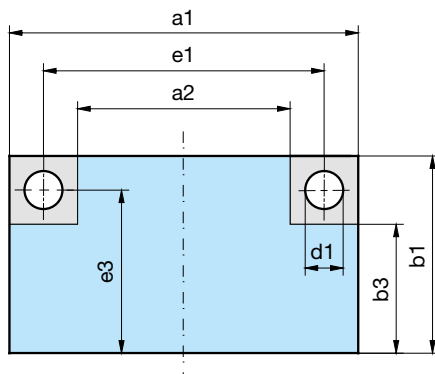
Auswahl Gestellplatten

Selection die set plates

Sélection des plaques de bloc à colonnes



siehe Seite
see page 4.66
voir page



SG-56-C1-
b1-a1-D-Mat

Mat.: 1.1730/C45W

Mat.: 3.4365 (AL)
auf Anfrage / on request / sur demande

| SG | b1 | a1 | C1 D | C2 D | a2 | b3 | e1 | e3 | Ød1 |
|----------------------|-----|---------|---------|---------|-----|-----|-----|-----|-----|
| SG-56-C1/ SG-5-C2 | 156 | 156 | 27 / 37 | 27 / 37 | 48 | 102 | 100 | 128 | 20 |
| | | 196 | 27 / 37 | 27 / 37 | 88 | 102 | 140 | 128 | 20 |
| | | 246 | 27 / 37 | 27 / 37 | 138 | 102 | 190 | 128 | 20 |
| | | 311 | 27 / 37 | 27 / 37 | 203 | 102 | 255 | 128 | 20 |
| | 196 | 196 | 27 / 37 | 27 / 37 | 74 | 135 | 132 | 164 | 25 |
| | | 246 | 27 / 37 | 27 / 37 | 124 | 135 | 182 | 164 | 25 |
| | | 311 | 27 / 37 | 27 / 37 | 189 | 135 | 247 | 164 | 25 |
| | | 396 | 27 / 37 | 27 / 37 | 274 | 135 | 332 | 164 | 25 |
| | | 496 | 37 / 47 | 37 / 47 | 360 | 128 | 424 | 160 | 32 |
| | | 626 | 37 / 47 | 37 / 47 | 490 | 128 | 554 | 160 | 32 |
| | 246 | 246 | 37 / 47 | 37 / 47 | 110 | 178 | 174 | 210 | 32 |
| | | 311 | 37 / 47 | 37 / 47 | 175 | 178 | 239 | 210 | 32 |
| | | 396 | 37 / 47 | 37 / 47 | 260 | 178 | 324 | 210 | 32 |
| | | 496 | 37 / 47 | 37 / 47 | 360 | 178 | 424 | 210 | 32 |
| | | 626 | 47 / 57 | 47 / 57 | 470 | 168 | 542 | 204 | 40 |
| | | 706 | 47 / 57 | 47 / 57 | 550 | 168 | 622 | 204 | 40 |
| | 311 | 311 | 37 / 47 | 37 / 47 | 175 | 243 | 239 | 275 | 32 |
| | | 396 | 37 / 47 | 37 / 47 | 260 | 243 | 324 | 275 | 32 |
| | | 496 | 47 / 57 | 47 / 57 | 340 | 233 | 412 | 269 | 40 |
| | | 626 | 47 / 57 | 47 / 57 | 470 | 233 | 542 | 269 | 40 |
| | | 706 | 47 / 57 | 47 / 57 | 550 | 233 | 622 | 269 | 40 |
| | | 796 | 47 / 57 | 47 / 57 | 640 | 233 | 712 | 269 | 40 |
| | 396 | 396 | 47 / 57 | 47 / 57 | 240 | 318 | 312 | 354 | 40 |
| | | 496 | 47 / 57 | 47 / 57 | 340 | 318 | 412 | 354 | 40 |
| 626 | | 57 / 67 | 57 / 67 | 448 | 307 | 530 | 348 | 50 | |
| 706 | | 57 / 67 | 57 / 67 | 528 | 307 | 610 | 348 | 50 | |
| 796 | | 57 / 67 | 57 / 67 | 618 | 307 | 700 | 348 | 50 | |
| 496 | 496 | 57 / 67 | 57 / 67 | 318 | 407 | 400 | 448 | 50 | |
| | 626 | 57 / 67 | 57 / 67 | 448 | 407 | 530 | 448 | 50 | |
| | 706 | 57 / 67 | 57 / 67 | 528 | 407 | 610 | 448 | 50 | |
| | 796 | 57 / 67 | 57 / 67 | 618 | 407 | 700 | 448 | 50 | |
| 626 | 626 | 57 / 67 | 57 / 67 | 448 | 537 | 530 | 578 | 50 | |
| | 706 | 57 / 67 | 57 / 67 | 528 | 537 | 610 | 578 | 50 | |
| | 796 | 57 / 67 | 57 / 67 | 618 | 537 | 700 | 578 | 50 | |