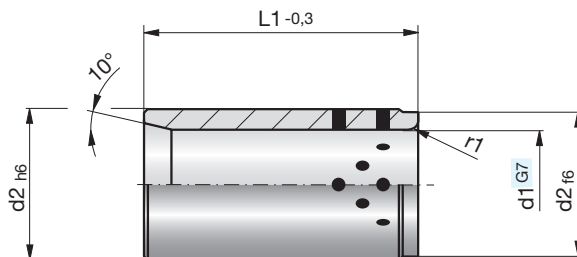


1

## Gleitführungsbuchsen, selbstschmierend

## Guide bushes, self-lubricating

## Bagues pour guidage lisse, autolubrifiantes



**SN1730-**

Mat.: Bronze  
190-220 HB S10/3000  
< 150 °C

SN1730-d1-L1

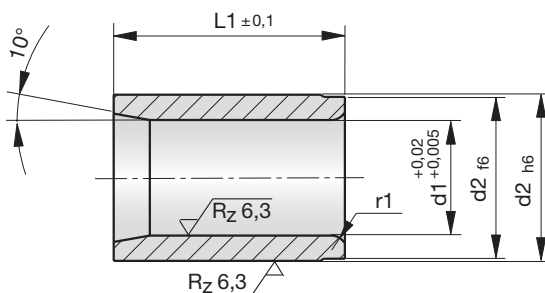


d1	L1	d2	r1	d1	L1	d2	r1
15/16	25	25	2	38/40	35	50	3
15/16	32	25	2	38/40	55	50	3
19/20	35	28	3	38/40	65	50	3
19/20	45	28	3	48/50	40	60	4
19/20	60	28	3	48/50	80	60	4
24/25	35	35	3	60	50	72	4
24/25	50	35	3	60	90	72	4
30/32	35	40	3	80	115	92	4
30/32	55	40	3				
30/32	65	40	3				

## Gleitführungsbuchsen

## Guide bushes

## Bagues pour guidage lisse



**Z4085-**

Mat.: Ampco 18  
HB30 = 193  
< 300 °C

Z4085-d1-L1



d1	L1	d2	r1
10	14	14	1,0
10	20	14	1,0
12	20	17	1,5
12	25	17	1,0
16	25	22	2,0
16	32	22	2,0

D 3002A 02.2019