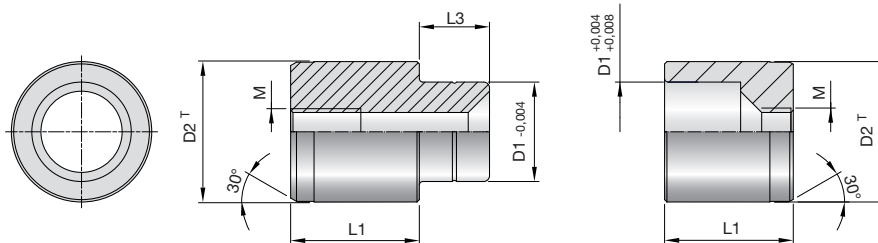


## Zentriereinheiten

## Centring elements

## Unités de centrage

1



**Z70-**

Mat.: ST  
58+2HRC

**Z70-D2**



| D2 | T            | D1  | L1 | L2 | L3 | M  | *SN3550...1) | *SN3550...2) |
|----|--------------|-----|----|----|----|----|--------------|--------------|
| 12 | +0,01/+0,015 | 8,5 | 11 | 23 | 6  | M4 | M3x16        | M3x25        |
| 14 | +0,015/+0,02 | 10  | 13 | 27 | 7  | M5 | M4x16        | M4x35        |
| 16 | +0,015/+0,02 | 11  | 15 | 31 | 9  | M5 | M4x16        | M4x35        |
| 18 | +0,015/+0,02 | 12  | 17 | 35 | 10 | M6 | M5x20        | M5x40        |
| 20 | +0,015/+0,02 | 13  | 19 | 39 | 11 | M6 | M5x20        | M5x40        |

\* nicht im Lieferumfang enthalten  
not included in the extent of delivery  
non compris dans le volume de livraison

