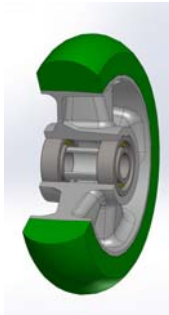


SERIES 62ER



“TR-ROLL” POLYURETHANE WHEELS WITH ERGONOMIC ROUND PROFILE, ALUMINIUM CENTRE, FIXED BRACKET TYPE EE MHD

Wheel description



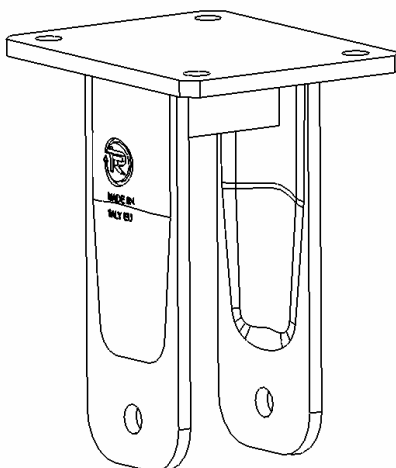
Tread: TR-ROLL polyurethane with ergonomic round profile, hardness 75 Shore A.

Centre: made of cast aluminium

Hub: the housing is obtained by moulding and contains ball bearings series Z

Bracket description

EE Medium Heavy Duty bracket (max. load capacity 1000 daN)



The bracket is made by a steel forged fixing plate with 4 holes, by two steel drawn sides and by a steel central stiffening. These elements are bounded by welding and properly protected against oxydation.