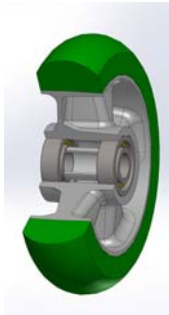


SERIES 62ER



**“TR-ROLL” POLYURETHANE WHEELS WITH ERGONOMIC ROUND PROFILE,
ALUMINIUM CENTRE
SWIVEL TOP PLATE BRACKET TYPE EE MHD**

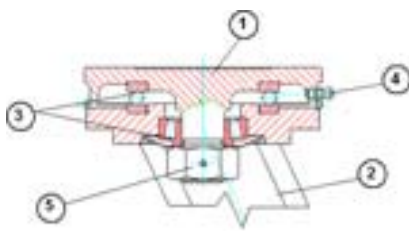
Wheel description



Tread: TR-ROLL polyurethane with ergonomic round profile, hardness 75 Shore A.
Centre: cast aluminium
Hub: the housing is obtained by moulding and contains ball bearings series Z.

Bracket description

Bracket EE Medium Heavy Duty max. load capacity 900 daN)



- 1) **Plate:** forged steel with integrated pin
 - 2) **Fork:** drawn sides electrowelded to the flange
 - 3) **Swivel actions:** axial ball bearing and taper roller bearing
 - 4) **Lubricator**
 - 5) **Nut anti-loosening system**
- Finish:** electrolytic galvanisation
Fitting: top plate