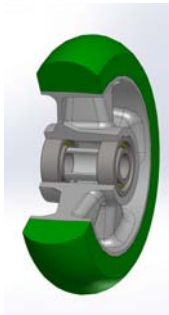


SERIES 62ER



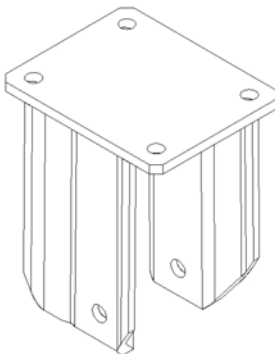
“TR-ROLL” POLYURETHANE WHEELS WITH ERGONOMIC ROUND PROFILE, ALUMINIUM CENTRE, FIXED BRACKET TYPE EP

Wheel description



Tread: TR-ROLL polyurethane with ergonomic round profile, hardness 75 Shore A.
Centre: cast aluminium
Hub: the housing is obtained by moulding and contains ball bearings series Z.

Bracket description



Extra-heavy duty bracket type EP (max. load capacity 1600 daN)

The bracket is made by a white galvanised steel fork.