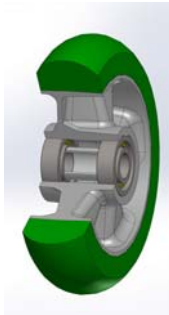


SERIES 62ER



“TR-ROLL” POLYURETHANE WHEELS WITH ERGONOMIC ROUND PROFILE, ALUMINIUM CENTRE, FIXED BRACKET TYPE NL-M

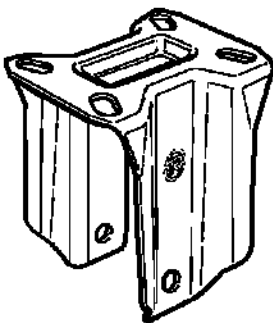
Wheel description



Tread: TR-ROLL polyurethane with ergonomic round profile, hardness 75 Shore A.
Centre: cast aluminium
Hub: the housing is obtained by moulding and contains ball bearings series Z.

Bracket description

Medium duty bracket type M (max. load capacity 500 daN)



The bracket is made by an electrolytically galvanised steel fork.