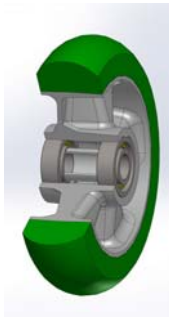


## SERIES 62ER



**“TR-ROLL” POLYURETHANE WHEELS WITH ERGONOMIC ROUND PROFILE, ALUMINIUM CENTRE, SWIVEL TOP PLATE BRACKET TYPE NL WITH BRAKE**

### Wheel description

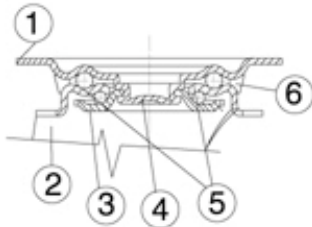


**Tread:** “TR-ROLL” polyurethane, hardness 75 Shore A.

**Centre:** aluminium.

**Hub:** the housing is obtained by moulding and contains ball bearings series Z.

### Bracket description



**Standard duty bracket type NL (max. carrying capacity 400 daN)**

1) **Plate:** electrolytically galvanised steel plate

2) **Fork:** electrolytically galvanised steel plate

3) **Ball Racing Ring:** electrolytically galvanised steel plate

4) **King Pin:** incorporated in top plate and cold riveted

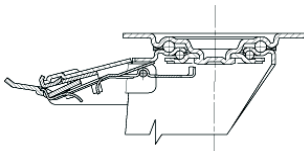
5) **Swivel actions:** double ring of greased balls

6) **Dust seal:** orange polyethylene

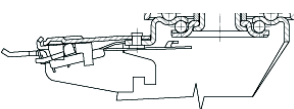
**Finishing:** electrolytic galvanisation

**Fitting:** top plate

### Brake description



**Diameter 80-150 mm**



**Diameter 150-200 mm**

### Freno ad azionamento anteriore

This brake fully locks wheel and castor rotation.

Thanks to its optimised dimensions and fold-away pedal, the brake is easy to engage and extremely compact.

The hardened carbon steel spring has very high corrosion resistance.