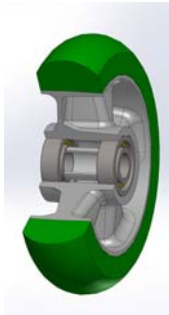


## SERIES 62ER



**“TR-ROLL” POLYURETHANE WHEELS WITH ERGONOMIC ROUND PROFILE, ALUMINIUM CENTRE, SWIVEL TOP PLATE BRACKET TYPE NL**

### Wheels description

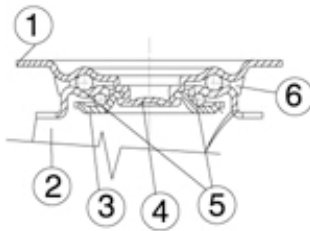


**Tread:** “TR-ROLL” polyurethane, hardness 75 Shore A.

**Centre:** aluminium.

**Hub:** the housing is obtained by moulding and contains ball bearings series Z.

### Bracket description



**Standard duty bracket type NL (max. carrying capacity 400 daN)**

1) **Plate:** electrolytically galvanised steel plate

2) **Fork:** electrolytically galvanised steel plate

3) **Ball Racing Ring:** electrolytically galvanised steel plate

4) **King Pin:** incorporated in top plate and cold riveted

5) **Swivel actions:** double ring of greased balls

6) **Dust seal:** orange polyethylene

**Finishing:** electrolytic galvanisation

**Fitting:** top plate