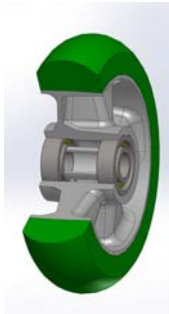


SERIES 62ER



“TR-ROLL” POLYURETHANE WHEELS WITH ERGONOMIC ROUND PROFILE, ALUMINIUM CENTRE, SWIVEL TOP PLATE BRACKET TYPE P

Wheel description



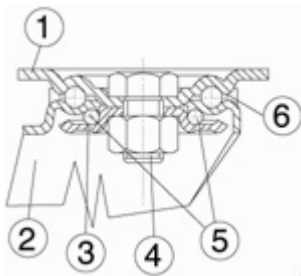
Tread: “TR-ROLL” polyurethane, hardness 75 Shore A.

Centre: aluminium.

Hub: the housing is obtained by moulding and contains ball bearings series Z

Bracket description

Medium-heavy duty bracket type P (max. carrying capacity 750 daN)



- 1) **Plate:** electrolytically galvanised steel plate
 - 2) **Fork:** electrolytically galvanised steel plate
 - 3) **Ball Racing Ring:** electrolytically galvanised steel plate
 - 4) **King Pin:** steel screw class 8.8 and nut
 - 5) **Swivel actions:** double ring of greased balls
 - 6) **Dust seal:** red polyamide
- Finishing:** yellow galvanisation
Fitting: top plate