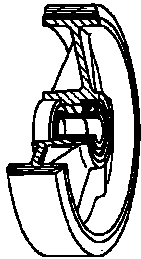


SERIES 66



“TR” POLYURETHANE WHEELS, POLYAMIDE 6 CENTRE, SWIVEL TOP PLATE BRACKET TYPE “M” WITH BRAKE

Wheel description



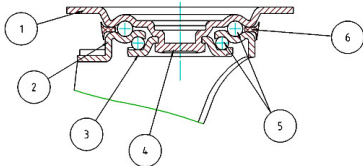
Tread: “TR” polyurethane tread, hardness 95+/-3 Shore A; excellent rolling resistance and elasticity, highly resistant to wear and to tearing.

Centre: polyamide 6.

Hub: the hub is available with plain bearing, with roller bearing and with ball bearing.

Bracket description

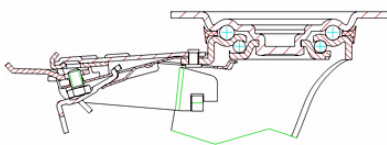
Medium duty bracket type M (max. carrying capacity 500 daN)



- 1) **Plate:** electrolytically galvanised steel plate
 - 2) **Fork:** electrolytically galvanised steel plate
 - 3) **Ball Racing Ring:** electrolytically galvanised steel plate
 - 4) **King Pin:** incorporated in top plate and cold riveted
 - 5) **Swivel actions:** double ring of greased balls
 - 6) **Dust seal:** blue polyethylene
- Finishing:** electrolytic galvanisation
Fitting: top plate

Brake description

Adjustable front-locking brake



This brake fully locks wheel and castor rotation.

Thanks to its optimised dimensions and fold-away pedal, the brake is easy to engage and extremely compact.

Locking force can be adjusted using an M8 socket screw – 13 mm spanner.