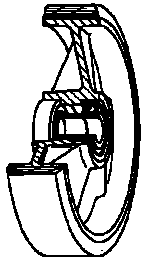


SERIES 66



“TR” POLYURETHANE WHEELS, POLYAMIDE 6 CENTRE, SWIVEL BOLT HOLE BRACKET TYPE “NL”

Wheel description

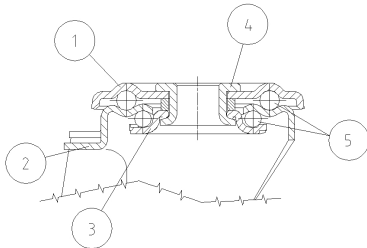


Tread: “TR” polyurethane tread, hardness 95+/-3 Shore A; excellent rolling resistance and elasticity, highly resistant to wear and to tearing.

Centre: polyamide 6.

Hub: the hub is available with plain bearing and with roller bearing.

Bracket description



Standard duty bracket type NL (max. carrying capacity 400 daN)

- 1) **Plate:** electrolytically galvanised steel plate
- 2) **Fork:** electrolytically galvanised steel plate
- 3) **Ball Racing Ring:** electrolytically galvanised steel plate
- 4) **King Pin:** incorporated in top plate and cold riveted
- 5) **Swivel actions:** double ring of greased balls

Finishing: electrolytic galvanisation

Fitting: bolt hole