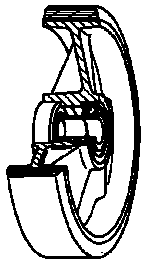


## SERIES 66



**“TR” POLYURETHANE WHEELS,  
POLYAMIDE 6 CENTRE,  
SWIVEL TOP PLATE BRACKET TYPE “NLX” AND BRAKE**

### Wheel description

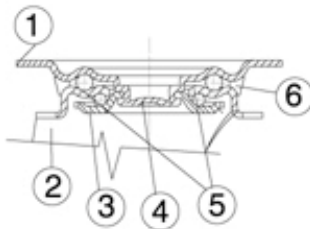


**Tread:** “TR” polyurethane tread, hardness 95+/-3 Shore A; excellent rolling resistance and elasticity, highly resistant to wear and to tearing.

**Centre:** polyamide 6.

**Hub:** the hub is available with plain bearing and with stainless steel roller bearing.

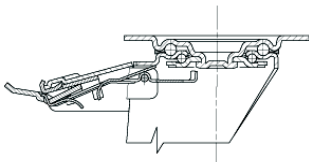
### Bracket description



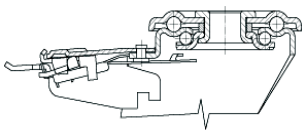
**Standard duty bracket type NLX (max. carrying capacity 400 daN)**

- 1) **Plate:** AISI 304 stainless steel
  - 2) **Fork:** AISI 304 stainless steel
  - 3) **Ball Racing Ring:** AISI 304 stainless steel
  - 4) **King Pin:** incorporated in top plate and cold riveted
  - 5) **Swivel actions:** double ring of greased balls
  - 6) **Dust seal:** orange polyethylene
- Fitting:** top plate

### Brake description



**Diameters 80-150 mm**



**Diameters 150-200 mm**

#### Front-locking brake

This brake fully locks wheel and castor rotation.

Thanks to its optimised dimensions and fold-away pedal, the brake is easy to engage and extremely compact.

The stainless steel spring has very high corrosion resistance.