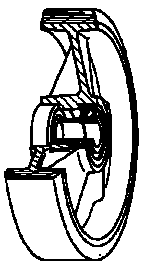


## SERIE 66



**RUOTE IN POLIURETANO “TR”,  
NUCLEO IN POLIAMMIDE 6,  
SUPPORTO ROTANTE PIASTRA TIPO PX CON FRENO**

### Wheel description



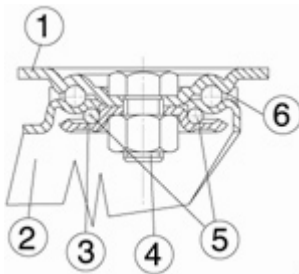
**Tread:** polyurethane tread, hardness 95+/-3 Shore A; excellent rolling resistance and elasticity, highly resistant to wear and to tearing.

**Centre:** polyamide 6.

**Hub:** the hub is available with plain bearing and with stainless steel roller bearing.

### Bracket description

**Medium-heavy duty bracket type PX (max. carrying capacity 750 daN)**



1) **Plate:** AISI 304 stainless steel

2) **Fork:** AISI 304 stainless steel

3) **Ball Racing Ring:** AISI 304 stainless steel

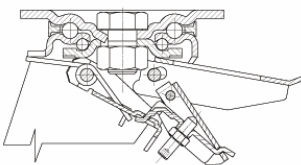
4) **King Pin:** A2 stainless steel screw and nut

5) **Swivel actions:** double ring of greased balls

6) **Dust seal:** red polyamide

**Fitting:** top plate

### Brake description



**Diam. 150-200 mm**

**Diam. 150-200 mm: Adjustable rear-locking brake**

Double-action rear brake that locks the wheel and the castor at the same time. The brake is efficient and easy to use: a simple top-to-bottom movement using the tip of the foot on two independent pedals is all that's needed to engage and release the lock quickly and smoothly. Locking force can be adjusted using an M8 socket screw.