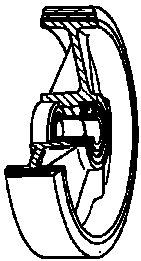


## SERIES 71



**GREY NON-MARKING THERMOPLASTIC RUBBER WHEELS,  
POLYPROPYLENE CENTRE,  
SWIVEL TOP PLATE BRACKET TYPE "NLX" AND BRAKE**

### Wheel description

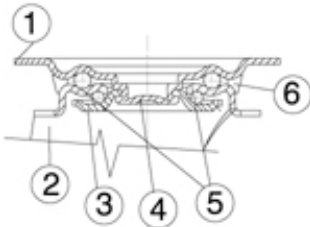


**Tread:** grey non-marking thermoplastic rubber tread, hardness 85+/-4 Shore A; excellent rolling resistance and elasticity.

**Centre:** polypropylene.

**Hub:** the hub is available with plain bearing and with stainless steel roller bearing.

### Bracket description



**Standard duty bracket type NLX (max. carrying capacity 400 daN)**

1) **Plate:** AISI 304 stainless steel

2) **Fork:** AISI 304 stainless steel

3) **Ball Racing Ring:** AISI 304 stainless steel

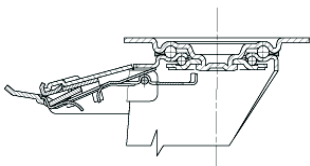
4) **King Pin:** incorporated in top plate and cold riveted

5) **Swivel actions:** double ring of greased balls

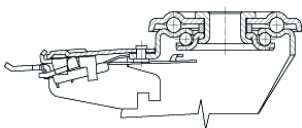
6) **Dust seal:** orange polyethylene

**Fitting:** top plate

### Brake description



**Diameters 80-150 mm**



**Diameters 150-200 mm**

#### Front-locking brake

This brake fully locks wheel and castor rotation.

Thanks to its optimised dimensions and fold-away pedal, the brake is easy to engage and extremely compact.

The stainless steel spring has very high corrosion resistance.

[www.tellurerota.com](http://www.tellurerota.com) – [www.laruotagiusta.it](http://www.laruotagiusta.it) – [www.therightwheel.com](http://www.therightwheel.com)