

PP Clamp saddle

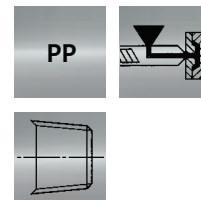
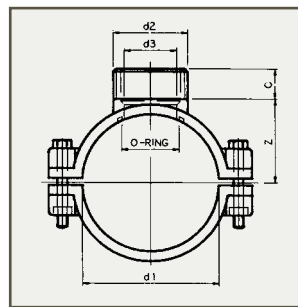
PP Aanboorzadels

PP Anschluss Schellen

PP Collier de prise

PP preas a staffa

Collarin de toma en PP



N = number of bolts, aantal bouten,

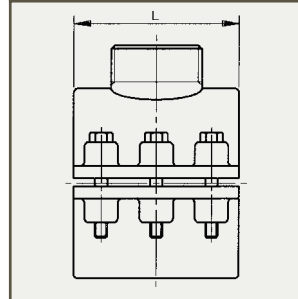
Schraubenmenge, nombre de boulons,

numero di bulloni, número de pernos

B = number of bolt holes, aantal boutgaten,

Bolzenlochmenge, nombre de trous de

boulon, numero di fori, número de taladros



Art.code	d1	d2	d3	L	Z	C	O-ring	N	B	Quantity
6.55.020	20	1/2" (M)	10	42	27	15	A	2 x R	2	100
6.55.025	25	1/2" (M)	12	50	27	15	B	2 x R	2	100
6.55.032	32	1/2" (M)	12	54	29	15	C	2 x S	2	100
6.55.033	32	3/4" (M)	17	54	29	16	E	2 x S	2	100
6.55.034	32	1" (M)	18	54	29	19	E	2 x S	2	100
6.55.040	40	1/2" (M)	12	60	32	15	C	4 x S	4	80
6.55.041	40	3/4" (M)	17	60	32	16	E	4 x S	4	80
6.55.042	40	1" (M)	23	60	32	19	G	4 x S	4	80
6.55.050	50	1/2" (M)	12	70	38	15	C	4 x S	4	60
6.55.051	50	3/4" (M)	17	70	38	16	E	4 x S	4	60
6.55.052	50	1" (M)	23	70	38	19	G	4 x S	4	60
6.55.053	50	1 1/4" (M)	26	70	38	21	I	4 x S	4	60
6.55.063	63	1/2" (M)	12	80	44	15	D	4 x S	4	40
6.55.064	63	3/4" (M)	17	80	44	16	F	4 x S	4	40
6.55.065	63	1" (M)	23	80	44	19	H	4 x S	4	40
6.55.066	63	1 1/4" (M)	26	80	44	21	J	4 x S	4	30
6.55.067	63	1 1/2" (M)	33	80	44	21	K	4 x S	4	30
6.55.075	75	1/2" (M)	12	92	51	15	D	4 x T	6	25
6.55.076	75	3/4" (M)	17	92	51	16	F	4 x T	6	25
6.55.077	75	1" (M)	23	92	51	19	H	4 x T	6	25
6.55.078	75	1 1/4" (M)	26	92	51	21	J	4 x T	6	25
6.55.079	75	1 1/2" (M)	33	92	51	21	K	4 x T	6	25
6.55.080	75	2" (M)	42	92	51	26	L	4 x T	6	25
6.55.090	90	1/2" (M)	12	98	58	15	D	4 x T	6	25
6.55.091	90	3/4" (M)	17	98	58	16	F	4 x T	6	25
6.55.092	90	1" (M)	23	98	58	19	H	4 x T	6	25
6.55.093	90	1 1/4" (M)	26	98	58	21	J	4 x T	6	25
6.55.094	90	1 1/2" (M)	33	98	58	21	K	4 x T	6	25
6.55.095	90	2" (M)	42	98	58	26	L	4 x T	6	25
6.55.110	110	1" (M)	23	114	68	19	H	4 x T	6	20
6.55.111	110	1 1/4" (M)	26	114	68	21	J	4 x T	6	20
6.55.112	110	1 1/2" (M)	33	114	68	21	K	4 x T	6	20
6.55.113	110	2" (M)	42	114	68	26	L	4 x T	6	20
6.55.114	110	2 1/2" (M)	58	114	68	31	N	4 x T	6	20
6.55.125	125	1" (M)	23	120	75	19	H	4 x T	6	15

Art.code	d1	d2	d3	L	Z	C	O-ring	N	B	Quantity
6.55.126	125	1 1/4" (M)	26	120	75	21	J	4 x T	6	15
6.55.127	125	1 1/2" (M)	33	120	75	21	K	4 x T	6	15
6.55.128	125	2" (M)	42	120	75	26	L	4 x T	6	15
6.55.129	125	2 1/2" (M)	58	120	75	31	N	4 x T	6	15
6.55.140	140	1 1/4" (M)	26	130	84	21	J	6 x T	6	10
6.55.141	140	2" (M)	42	130	84	26	L	6 x T	6	10
6.55.142	140	2 1/2" (M)	58	130	84	31	N	6 x T	6	10
6.55.160	160	1" (M)	23	144	93	19	H	6 x T	6	10
6.55.161	160	1 1/4" (M)	26	144	93	21	J	6 x T	6	10
6.55.162	160	1 1/2" (M)	33	144	93	21	K	6 x T	6	10
6.55.163	160	2" (M)	42	144	93	26	L	6 x T	6	10
6.55.164	160	2 1/2" (M)	58	144	93	31	N	6 x T	6	10
6.55.165	160	3" (M)	72	144	93	34	P	6 x T	6	10